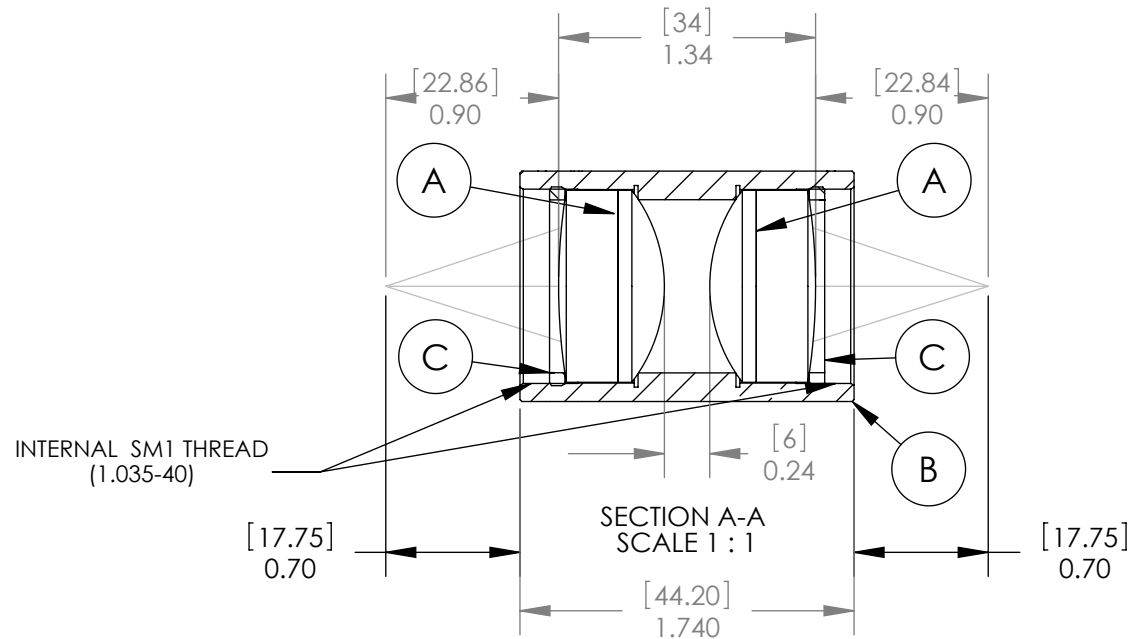
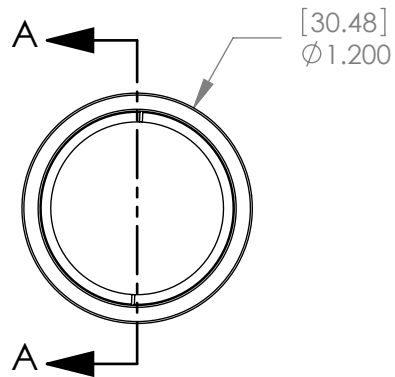


PART	PART NO.	MATERIAL
A	AC254-030-A1	BAFN10-SFL6
B	LENS MOUNT	6061-T6 ALUMINUM
C	SM1RR	6061-T6 ALUMINUM



SPECIFICATIONS:

DESIGN WAVELENGTH: 486.1, 587.6 & 656.3nm
 COATING: BBAR 400-700nm
 COATING RANGE: R(AVG)<0.5% FROM 400-700nm
 MAGNIFICATION: 1:1

Dimensions are in $\frac{[mm]}{in}$

NOTE:
FOR INFORMATION ONLY. NOT INTENDED FOR MANUFACTURING.

THORLABS INC. PO BOX 366
NEWTON NJ

	NAME	DATE
DRAWN	AP	04/14/06
ENG APPR.	TO	04/14/06
MFG APPR.	TO	04/14/06

TITLE: MATCHED ACHROMAT PAIRS
F1=30mm, F2=30mm

MATERIAL: SEE TABLE SIZE A REV. C

SCALE: 1:1 SHEET 1 OF 1

DWG. NO. 13317-E01 PART NO. MAP103030-A1