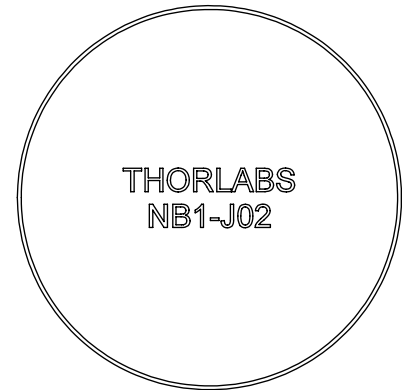
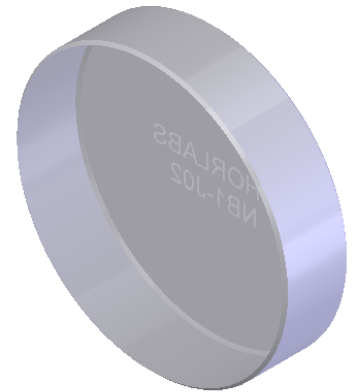
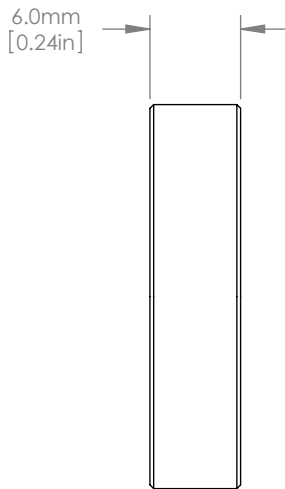


Ø25.4mm  
[1.00in]



NOTES/SPECIFICATIONS:

1. DESIGN WAVELENGTH RANGE: 244-257nm
2. CLEAR APERTURE: >80% DIAMETER
3. DIAMETER TOLERANCE: +0.0 / -0.1mm
4. THICKNESS TOLERANCE: ±0.2mm
5. SURFACE FLATNESS:  $\lambda/10$  AT 632.8nm OVER CLEAR APERTURE
6. SURFACE QUALITY: 10-5 SCRATCH-DIG
7. BACK SURFACE: FINE GROUND
8. PARALLELISM:  $\leq 3$ arcmin
9. DURABILITY: MIL-C-675
10. COATING: REFLECTIVE COATING  
 $R_{s\text{ avg}}$  AND  $R_{p\text{ avg}} > 99.5\%$  OVER WAVELENGTH RANGE  
 AOI: 45°
11. DAMAGE THRESHOLD: 1 kW/cm<sup>2</sup> CW

FOR INFORMATION ONLY  
NOT FOR MANUFACTURING PURPOSES

DRAWING PROJECTION			<b>THORLABS</b> www.thorlabs.com	
NAME	DATE	Ø25.4mm Ar Ion MIRROR $\lambda = 244-257\text{nm}$ , 45° AOI		
DRAWN	DATE			
APPROVAL	DATE	MATERIAL		REV
COPYRIGHT © 2010 BY THORLABS		FUSED SILICA		B
VALUES IN PARENTHESIS ARE CALCULATED AND MAY CONTAIN ROUND OFF ERRORS		ITEM #	APPROX WEIGHT	
		NB1-J02	0.007 kg	