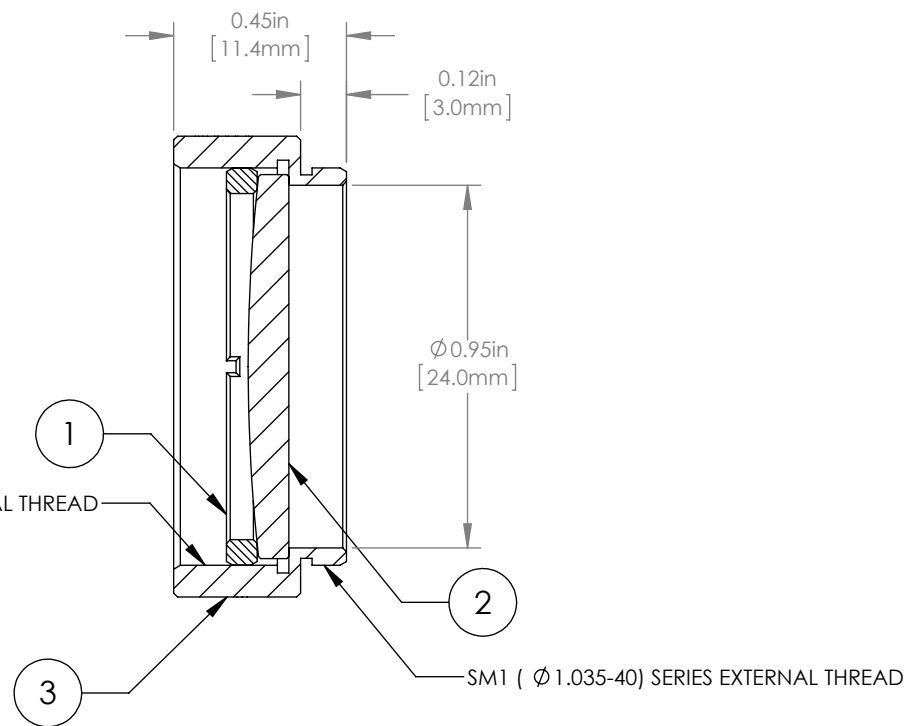
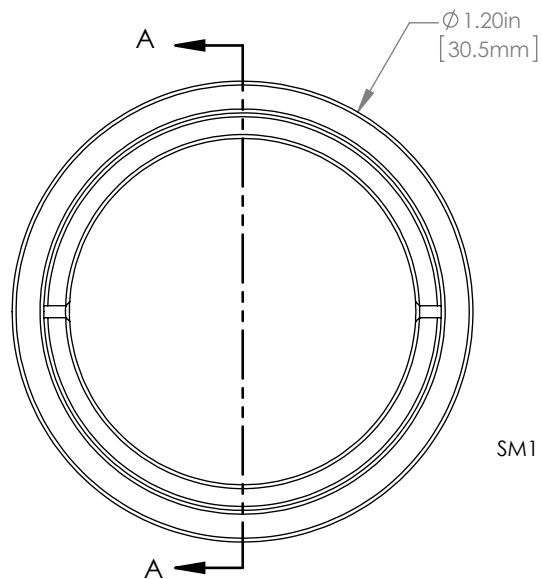


	PART DESCRIPTION	MATERIAL
①	SM1RR	ANODIZED ALUMINUM
②	LA4158-B	UV FUSED SILICA
③	ENGRAVED HOUSING	ANODIZED ALUMINUM



NOTES/SPECIFICATIONS:

- DESIGN WAVELENGTH: 546nm
- FOCAL LENGTH: $f=250.0\text{mm} \pm 1\%$
- WORKING DISTANCE (REF): 244.4mm
- CLEAR APERTURE: $> \text{Ø} 22.86\text{mm}$
- SURFACE QUALITY: 40-20 SCRATCH-DIG
- COATING: BBAR $R_{\text{avg}} < 0.5\%$ FROM 650-1050nm, AOI: 0°, ON OUTER OPTICAL SURFACES

FOR INFORMATION ONLY
NOT FOR MANUFACTURING PURPOSES

DRAWING PROJECTION		
NAME	DATE	
DRAWN GG	13/OCT/15	
APPROVAL DD	13/OCT/15	
COPYRIGHT © 2015 BY THORLABS		
VALUES IN PARENTHESIS ARE CALCULATED AND MAY CONTAIN ROUND OFF ERRORS		

THORLABS www.thorlabs.com	
Ø 1" MOUNTED PLANO-CONVEX LENS, f=250mm, -B COAT	
MATERIAL	REV A
SEE TABLE	
ITEM #	APPROX WEIGHT
LA4158-B-ML	9 g