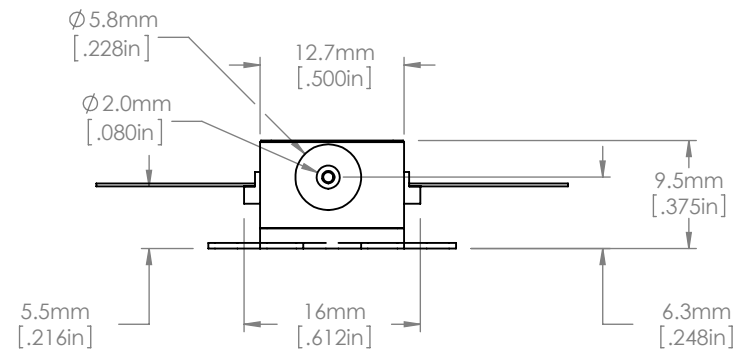
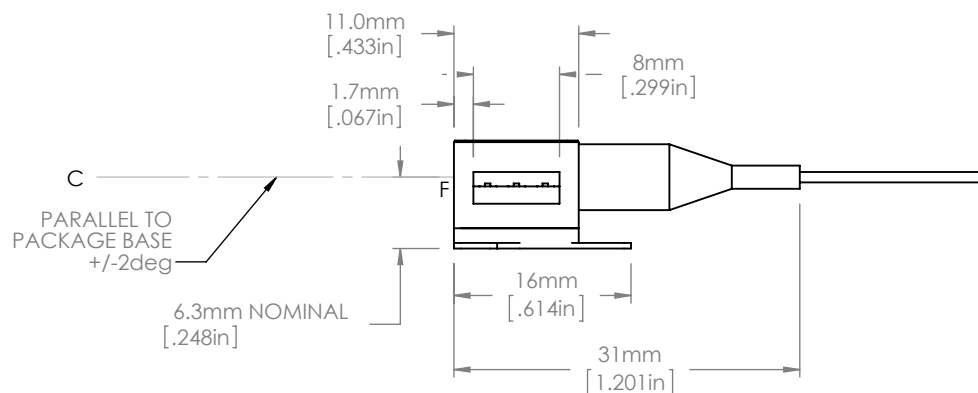


PIN IDENTIFICATION

1. TEC +
2. Thermistor
3. Thermistor
4. Dev Anode
5. Dev Cathode
6. TEC -



NOTES :

1. F DENOTES EMISSION POINT FROM CHIP FACET
C DENOTES CENTRAL AXIS FOR EMERGENT BEAM
2. THE DEVICE IS PROVIDED WITH A FIBER TAIL OF 1000mm MINIMUM LENGTH AND TERMINATED IN AN FC/APC CONNECTOR; THE FIBER IS CORNING SMF28E TYPE.

FOR INFORMATION ONLY
NOT FOR MANUFACTURING PURPOSES

DRAWING PROJECTION			 THORLABS www.thorlabs.com	
NAME	DATE	SAF GAIN CHIP ASSEMBLY (1550nm)		
DRAWN	AD	27/JUL/12	MATERIAL	N/A
APPROVAL	JW	27/JUL/12	ITEM #	SAF1550S2
COPYRIGHT © 2012 BY THORLABS			APPROX WEIGHT	0.018 kg
VALUES IN PARENTHESIS ARE CALCULATED AND MAY CONTAIN ROUND OFF ERRORS			REV	A