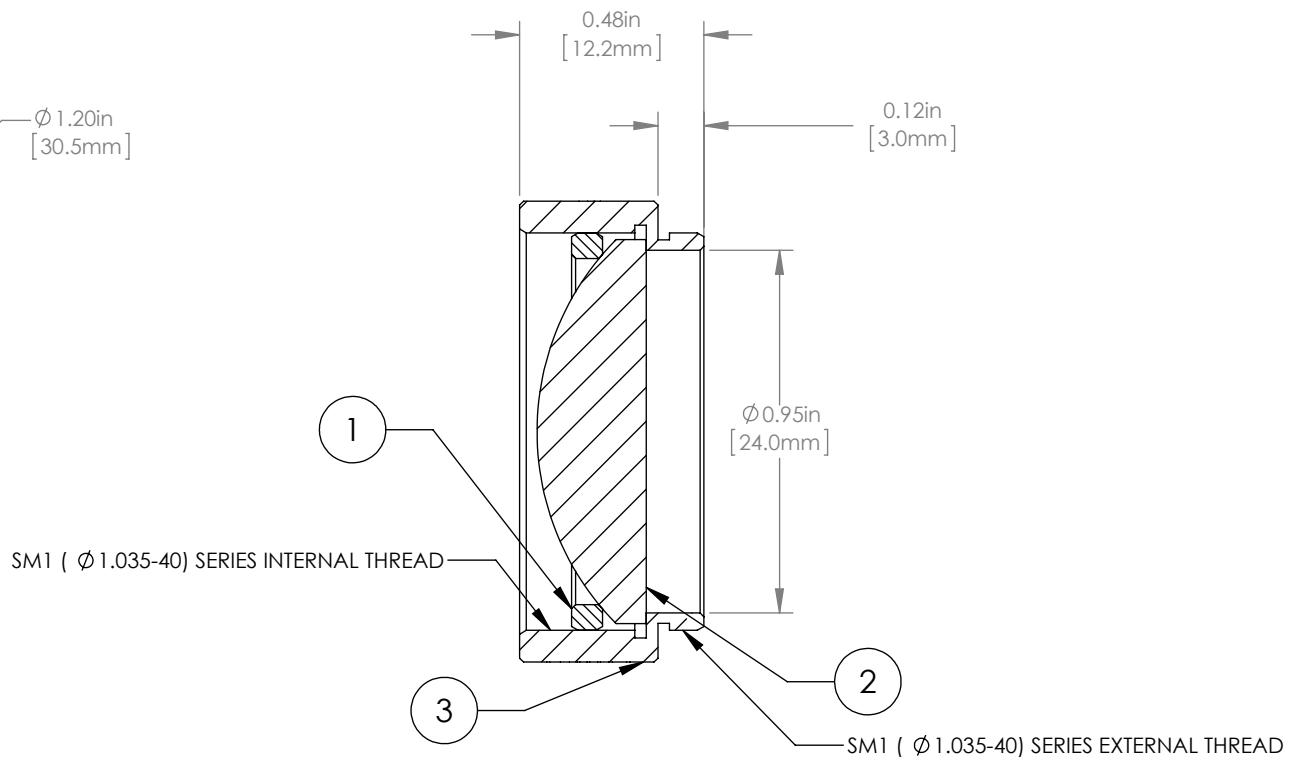
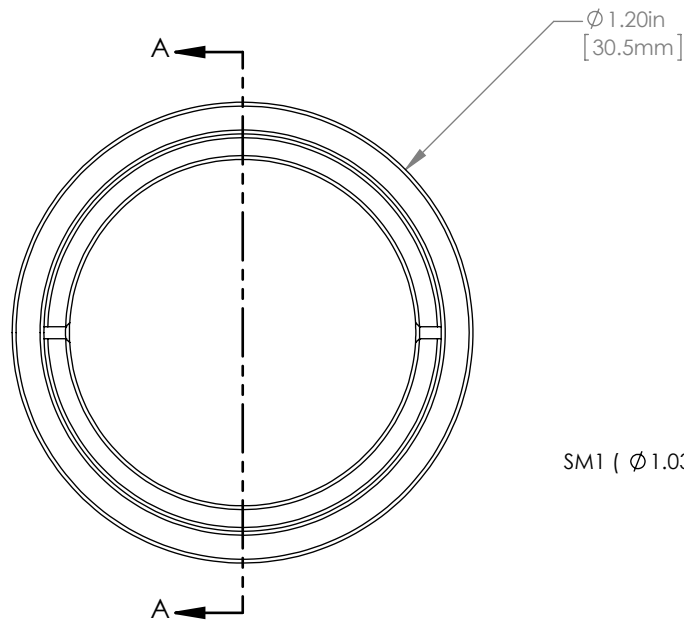


	PART DESCRIPTION	MATERIAL
①	SM1RR	ANODIZED ALUMINUM
②	LA1027-C	N-BK7
③	ENGRAVED HOUSING	ANODIZED ALUMINUM



NOTES/SPECIFICATIONS:

- DESIGN WAVELENGTH: 633nm
- FOCAL LENGTH:  $f=35.0\text{mm} \pm 1\%$
- WORKING DISTANCE (REF): 26.4mm
- CLEAR APERTURE:  $> \text{Ø} 22.86\text{mm}$
- SURFACE QUALITY: 40-20 SCRATCH-DIG
- COATING: BBAR  $R_{\text{avg}} < 0.5\%$  FROM 1050-1700nm, AOI: 0°, ON OUTER OPTICAL SURFACES

FOR INFORMATION ONLY  
NOT FOR MANUFACTURING PURPOSES

DRAWING PROJECTION					
	NAME		DATE	<b>THORLABS</b> www.thorlabs.com Ø 1" MOUNTED PLANO CONVEX LENS, $f=35\text{mm}$ , -C COAT	
DRAWN	GG		15/OCT/15		
APPROVAL	DD		15/OCT/15		
MATERIAL SEE TABLE REV A					
COPYRIGHT © 2015 BY THORLABS				ITEM #	APPROX WEIGHT
VALUES IN PARENTHESIS ARE CALCULATED AND MAY CONTAIN ROUND OFF ERRORS				LA1027-C-ML	37 g