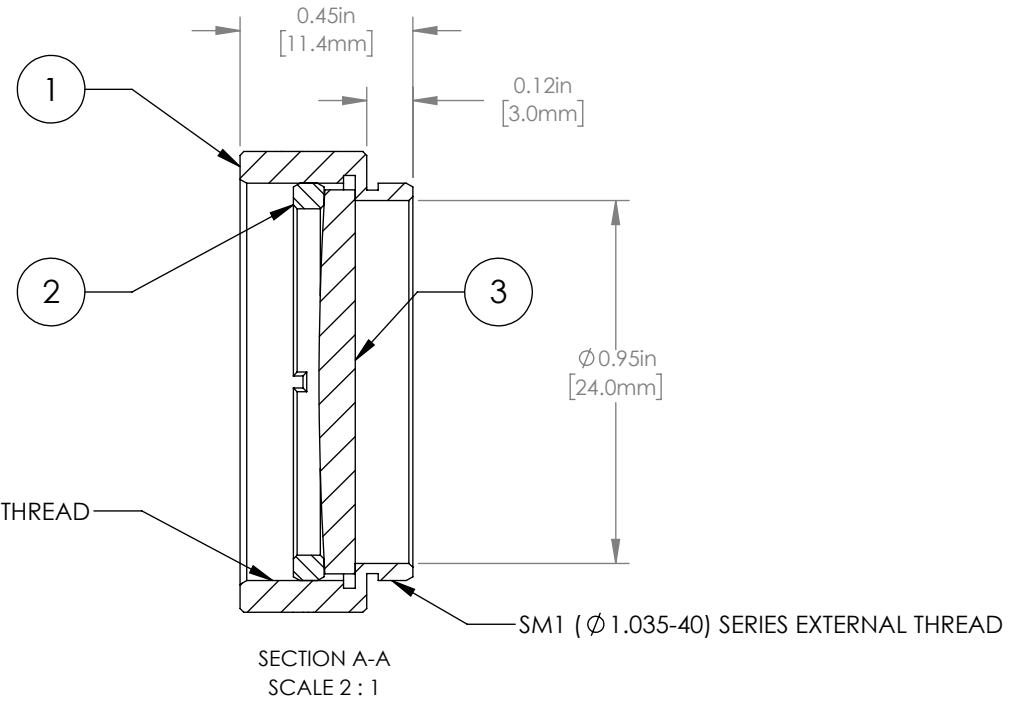
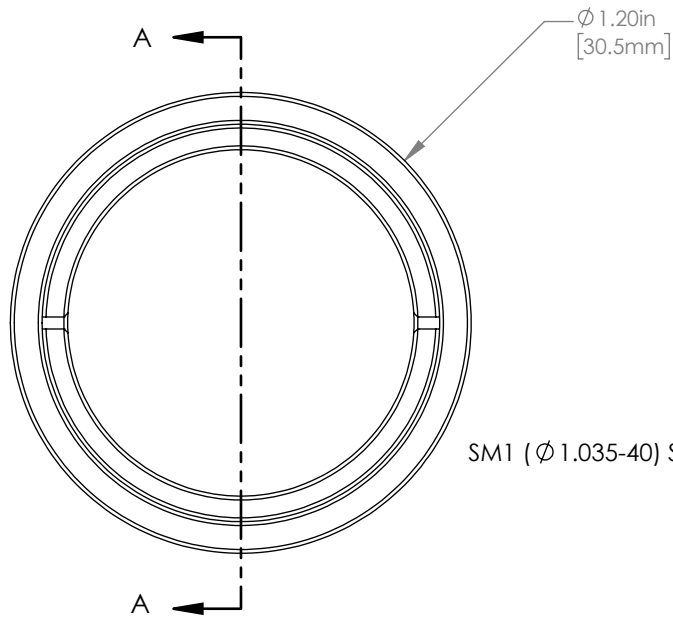


	PART DESCRIPTION	MATERIAL
①	ENGRAVED HOUSING	ANODIZED ALUMINUM
②	SM1RR	ANODIZED ALUMINUM
③	LA1172-A	N-BK7



NOTES/SPECIFICATIONS:

- DESIGN WAVELENGTH: 587.6 nm
- FOCAL LENGTH:  $f=398.7\text{ mm} \pm 1\%$
- WORKING DISTANCE: 393.3 mm
- CLEAR APERTURE:  $\phi 22.9\text{ mm}$
- SURFACE QUALITY: 40-20 SCRATCH-DIG
- COATING: BBAR 350-700 nm,  $R_{\text{avg}} < 0.5\%$ ,  $0^\circ$  AOI

FOR INFORMATION ONLY  
NOT FOR MANUFACTURING PURPOSES

DRAWING PROJECTION					
	NAME	DATE	<b>THORLABS</b> www.thorlabs.com		
DRAWN	GG	22/AUG/19	MOUNTED $\phi 25.4\text{ mm}$ , $f = 400.0\text{ mm}$ PLANO CONVEX LENS, A COATED		
APPROVAL	DD	22/AUG/19	MATERIAL		REV
COPYRIGHT © 2019 BY THORLABS			SEE TABLE		B
VALUES IN PARENTHESIS ARE CALCULATED AND MAY CONTAIN ROUND OFF ERRORS			ITEM #	APPROX WEIGHT	
			LA1172-A-ML	8 g	