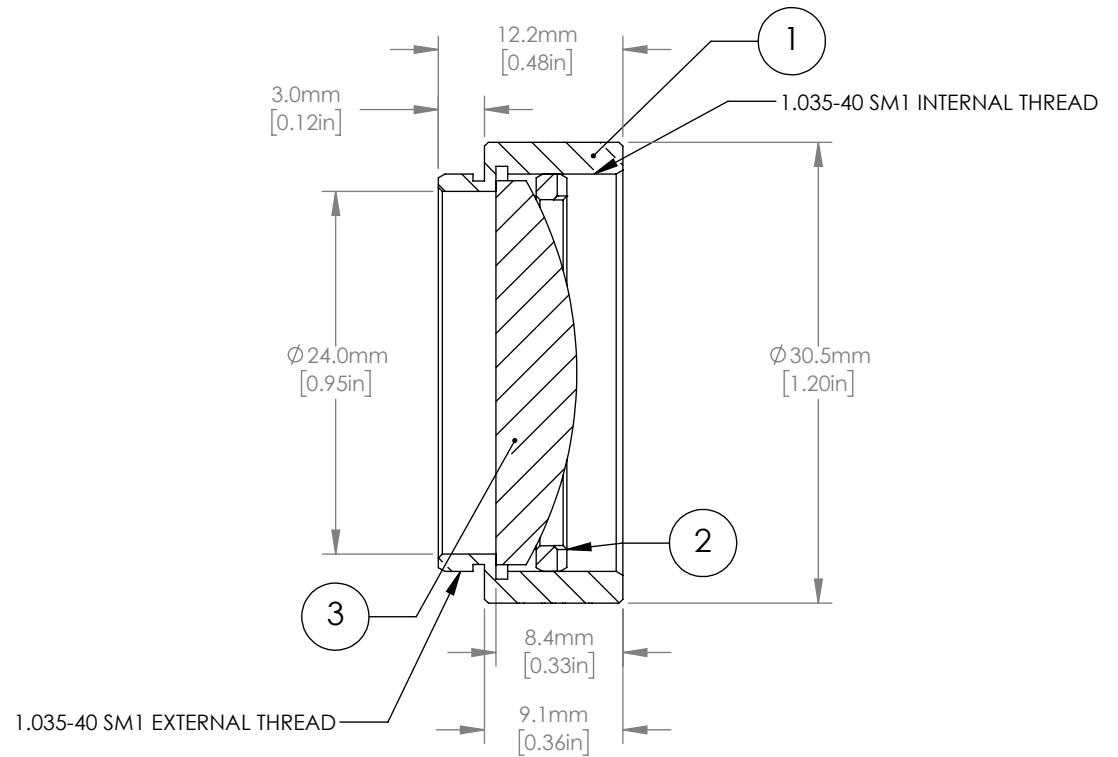
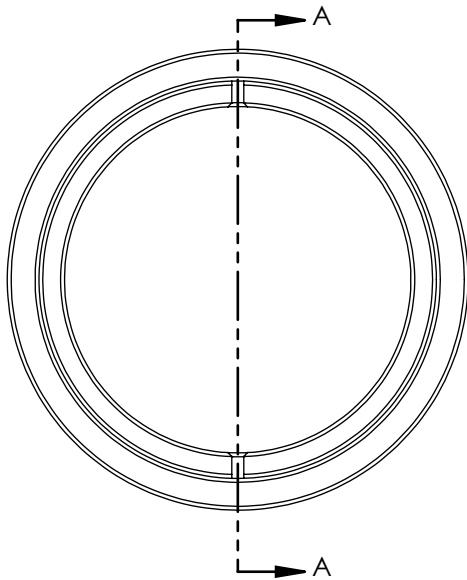


	PART DESCRIPTION	MATERIAL
①	ENGRAVED LENS TUBE	ANODIZED ALUMINUM
②	SM1RR	ANODIZED ALUMINUM
③	LA1131-A	N-BK7



NOTES/SPECIFICATIONS:

- DESIGN WAVELENGTH: 633nm
- FOCAL LENGTH: $f=50.0\text{mm} \pm 1\%$
- WORKING DISTANCE: 43.7mm
- CLEAR APERTURE: >90% OF LENS DIAMETER
- SURFACE QUALITY: 40-20 SCRATCH-DIG
- COATING: BBAR $R_{\text{avg}} < 0.5\%$ FROM 350nm-700nm, 0 AOI, ON OUTER OPTICAL SURFACES

FOR INFORMATION ONLY
NOT FOR MANUFACTURING PURPOSES

SECTION A-A
SCALE 2:1

DRAWING PROJECTION		THORLABS www.thorlabs.com	
NAME	DATE	PLANO-CONVEX LENS, Ø1", SM1-THREADED MOUNT, $f = 50.0$ mm, A-COAT	
DRAWN	06/NOV/20	MATERIAL	REV B
APPROVAL	12/NOV/20	SEE TABLE	
COPYRIGHT © 2020 BY THORLABS		ITEM #	APPROX WEIGHT
VALUES IN PARENTHESIS ARE CALCULATED AND MAY CONTAIN ROUND OFF ERRORS		LA1131-A-ML	0.030 kg