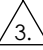

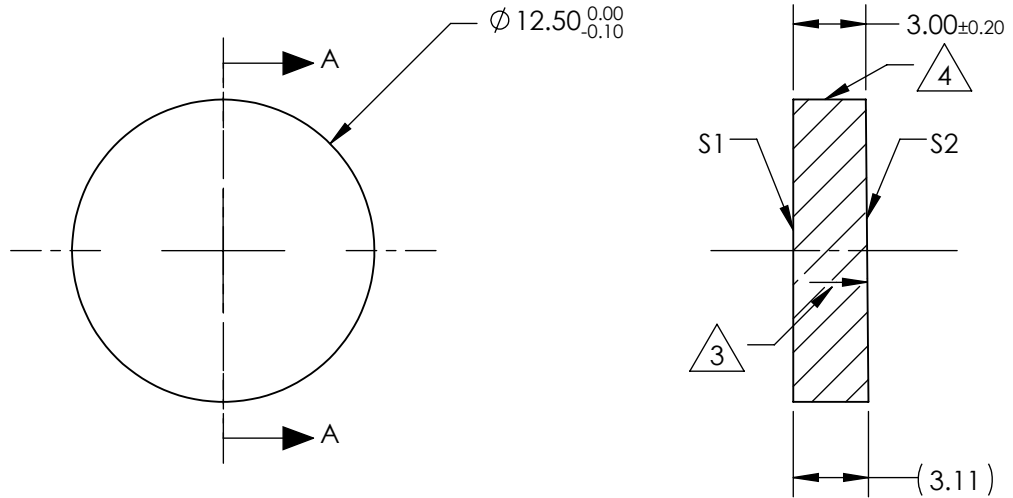


NOTES:

1. SUBSTRATE MATERIAL:  
Fused Silica (Corning 7980)
2. COATING (APPLY ACROSS CLEAR APERTURE)  
S1 & S2: Rabs ≤1.0% @ 350 - 450nm  
Ravg ≤1.5% @ 250 - 700nm
3.  ARROW POINTS TOWARDS TILTED SURFACE
4.  FINE GROUND SURFACE
5. POWER, IRREGULARITY, AND SURFACE QUALITY SPECIFICATIONS APPLY ACROSS CLEAR APERTURE
6. RoHS COMPLIANT



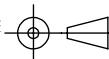
SECTION A-A

**FOR INFORMATION ONLY:  
DO NOT MANUFACTURE  
PARTS TO THIS DRAWING**

SPECIFICATIONS SUBJECT TO CHANGE WITHOUT NOTICE  
DIMENSIONS ARE FOR REFERENCE ONLY

	S1	S2
SHAPE	PLANO	PLANO
RADIUS	∞	∞
MIN CLEAR APERTURE	Ø11.25	Ø11.25
SURFACE QUALITY	20-10	20-10
SURFACE ACCURACY	λ/10	λ/10
BEVEL	PROTECTIVE AS NEEDED	PROTECTIVE AS NEEDED

THIRD ANGLE  
PROJECTION



ALL DIMS IN

mm

 **Edmund Optics®**

TITLE

12.5mm Dia., UV-VIS Coated, Fused Silica  
Wedged Window

DWG NO

17663

SHEET  
1 OF 1