

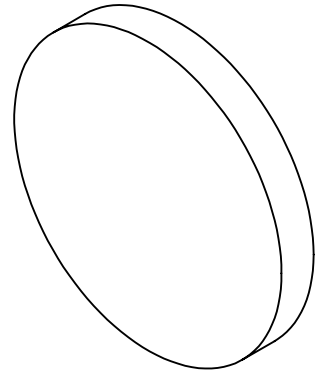
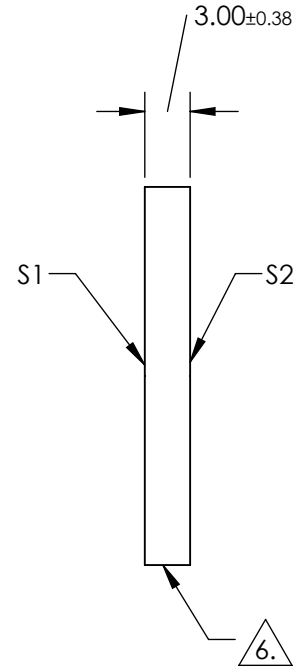
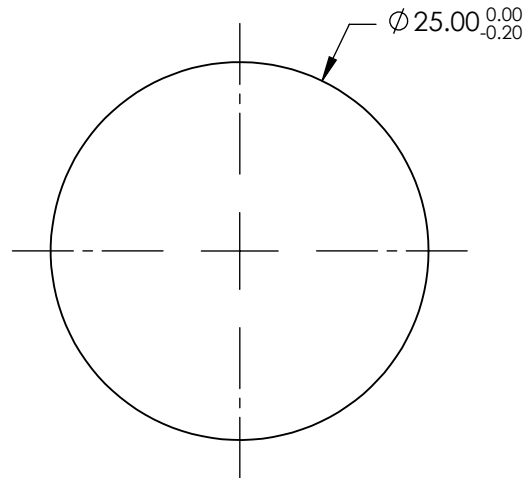
NOTES:

1. SUBSTRATE: Fused Silica (Corning 7980)
2. ROHS: COMPLIANT
3. SURFACE S2 TO BE PARALLEL TO SURFACE S1 WITHIN <5 ARCMIN
4. COATING(APPLY ACROSS CLEAR APERTURE)

S1 & S2: R(AVG) ≤1.75% @ 400 - 700nm

5. TRANSMITTED WAVEFRONT DISTORTION: ≤ 1λ

 FINE GRIND SURFACE



**FOR INFORMATION ONLY:
DO NOT MANUFACTURE
PARTS TO THIS DRAWING**

SPECIFICATIONS SUBJECT TO CHANGE WITHOUT NOTICE
DIMENSIONS ARE FOR REFERENCE ONLY

| | S1 | S2 |
|-----------------|---------------------|---------------------|
| SHAPE | PLANO | PLANO |
| SURFACE QUALITY | 60-40 | 60-40 |
| CLEAR APERTURE | $\phi 22.50$ | $\phi 22.50$ |
| BEVEL | PROTECTED AS NEEDED | PROTECTED AS NEEDED |

THIRD ANGLE PROJECTION 

ALL DIMS IN mm

 **Edmund Optics®**

TITLE

25mm Dia., 3mm Thick MgF2 Coated, 1λ
Fused Silica Window

DWG NO

19852

SHEET
1 OF 1