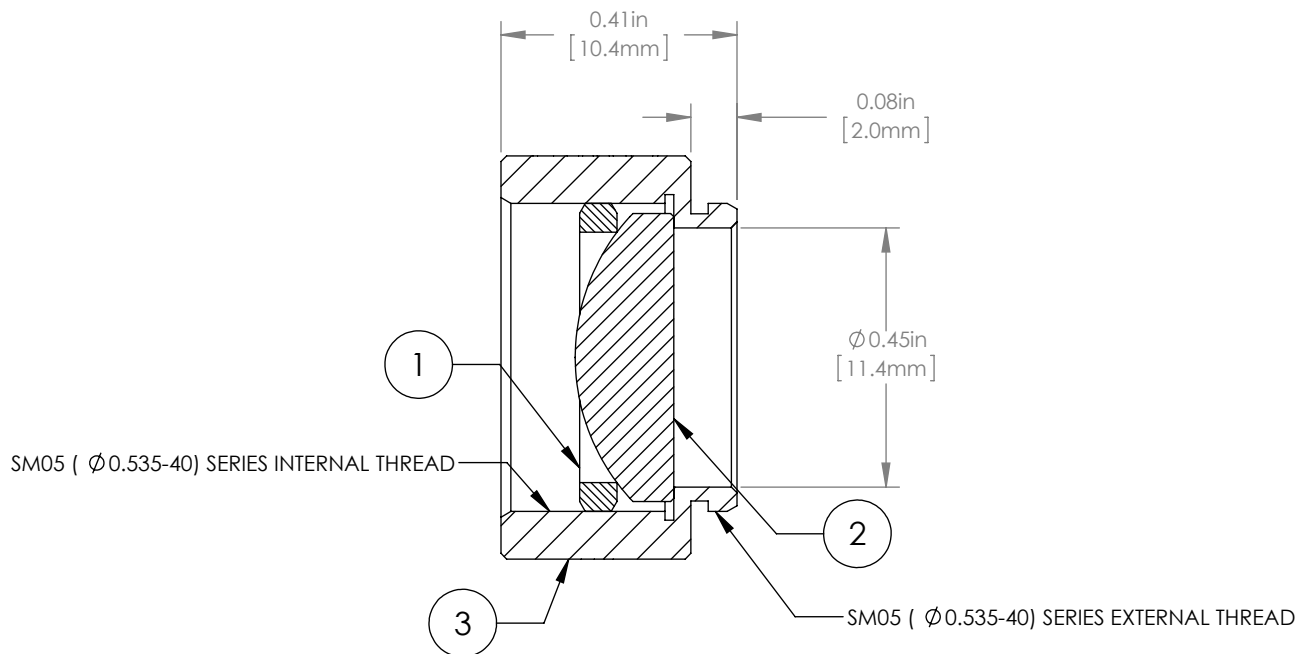
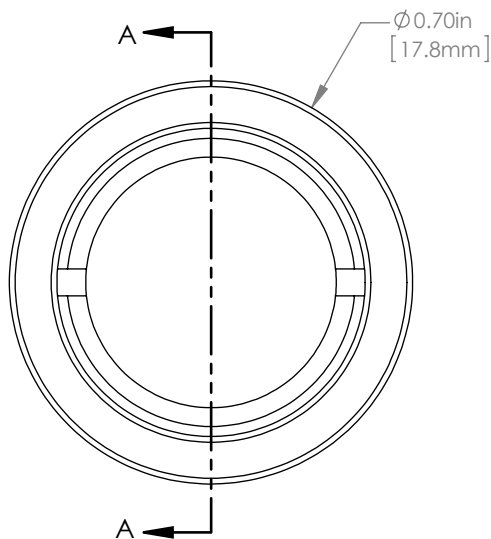
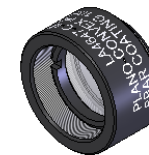


	PART DESCRIPTION	MATERIAL
①	SM05RR	ANODIZED ALUMINUM
②	LA4647-C	UV FUSED SILICA
③	ENGRAVED HOUSING	ANODIZED ALUMINUM



NOTES/SPECIFICATIONS:

1. DESIGN WAVELENGTH: 546nm
2. FOCAL LENGTH:  $f=20.0\text{mm} \pm 1\%$
3. WORKING DISTANCE (REF): 14.2mm
4. CLEAR APERTURE:  $> \text{Ø} 11.05\text{mm}$
5. SURFACE QUALITY: 40-20 SCRATCH-DIG
6. COATING: BBAR  $R_{\text{avg}} < 0.5\%$  FROM 1050-1700nm, AOI: 0°, ON OUTER OPTICAL SURFACES

FOR INFORMATION ONLY  
NOT FOR MANUFACTURING PURPOSES

DRAWING PROJECTION					
	NAME		DATE	<b>THORLABS</b> www.thorlabs.com Ø 1/2" MOUNTED PLANO-CONVEX LENS, f=20mm, -C COAT	
DRAWN	GG		13/OCT/15		
APPROVAL	DD		13/OCT/15		
COPYRIGHT © 2015 BY THORLABS				MATERIAL SEE TABLE	
VALUES IN PARENTHESIS ARE CALCULATED AND MAY CONTAIN ROUND OFF ERRORS				ITEM # <b>LA4647-C-ML</b>	APPROX WEIGHT <b>3 g</b>

REV  
A