

NOTES:

1. SUBSTRATE:
NITROCELLULOSE

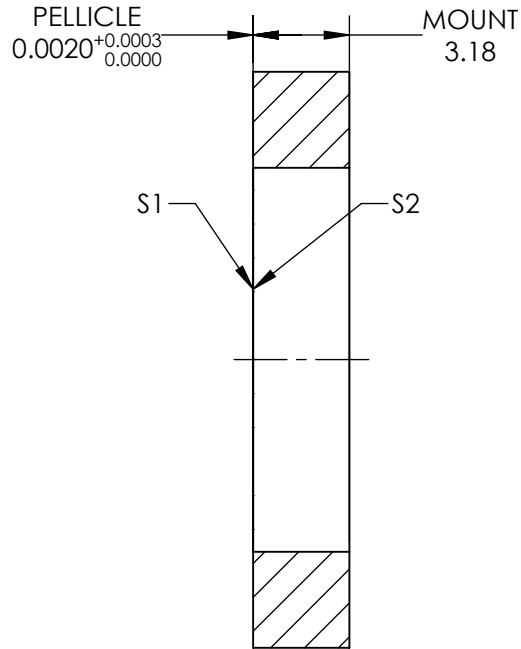
2. COATING (APPLY ACROSS CLEAR APERTURE)

S1: UNCOATED

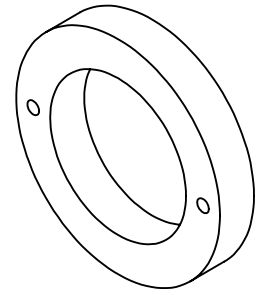
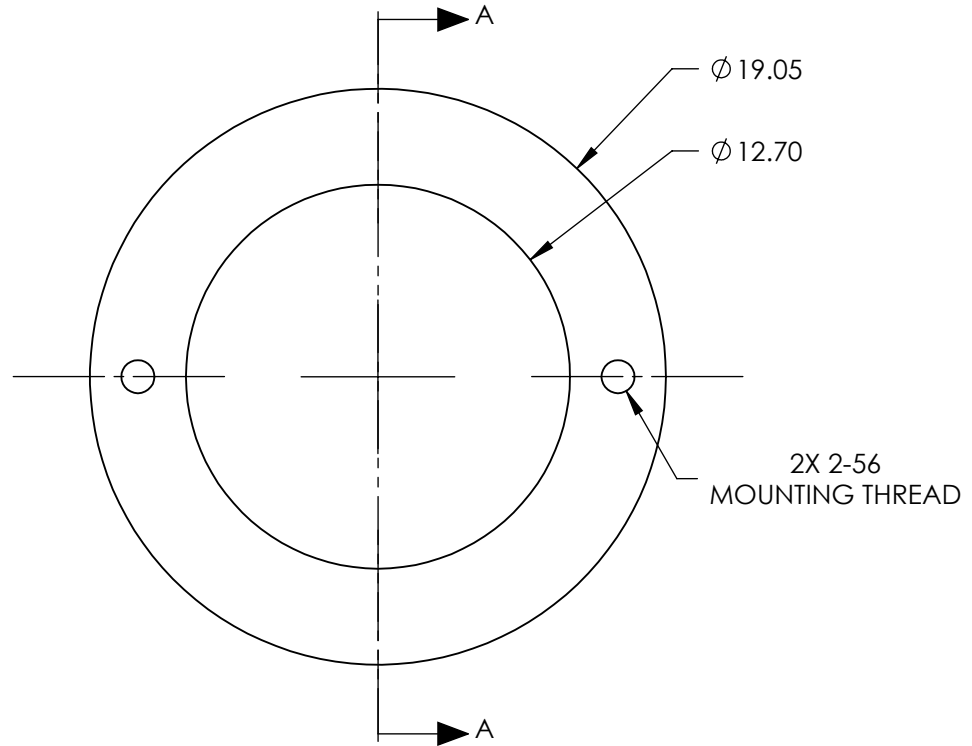
8% R @ 400-2200nm @ 45° AOI
92% T @ 400-2200nm @ 45° AOI
R/T TOLERANCE: ±3%

S2: NONE

3. ROHS COMPLIANT



SECTION A-A



**FOR INFORMATION ONLY:
DO NOT MANUFACTURE
PARTS TO THIS DRAWING**

SPECIFICATIONS SUBJECT TO CHANGE WITHOUT NOTICE
DIMENSIONS ARE FOR REFERENCE ONLY

	S1	S2
SHAPE	PLANO	PLANO
SURFACE QUALITY	40-20	40-20
CLEAR APERTURE	Ø 12.7	Ø 12.7
BEVEL	PROTECTED AS NEEDED	PROTECTED AS NEEDED



ALL DIMS IN

mm

EO® **Edmund Optics**®

TITLE

12.7mm Clear Aperture 8R/92T, Pellicle
Beamsplitter

DWG NO

19307

SHEET
1 OF 1