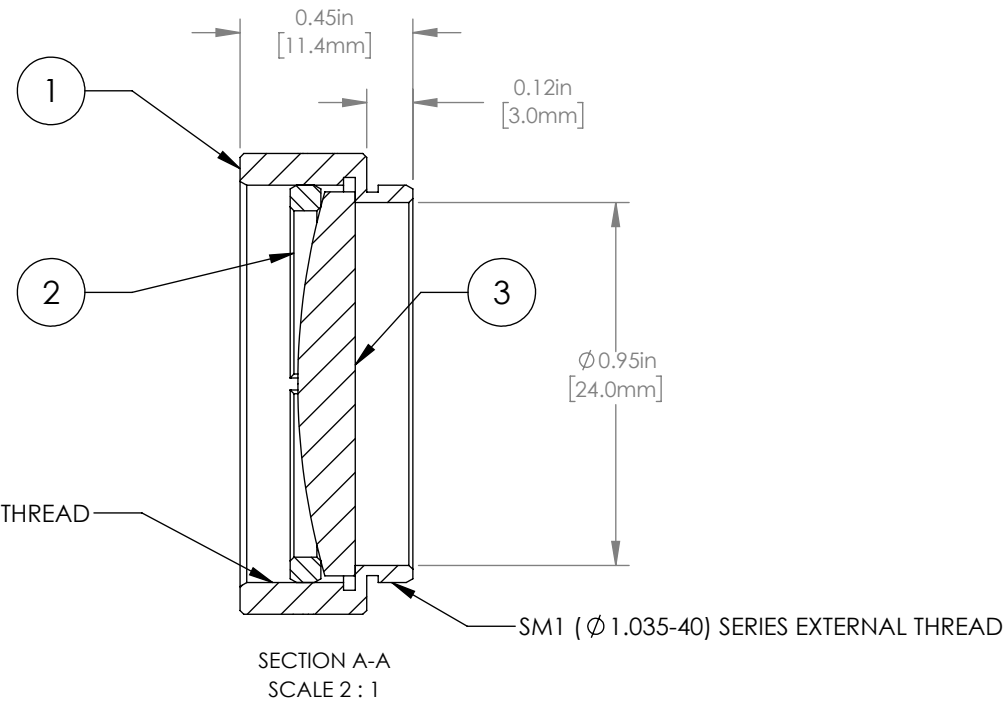
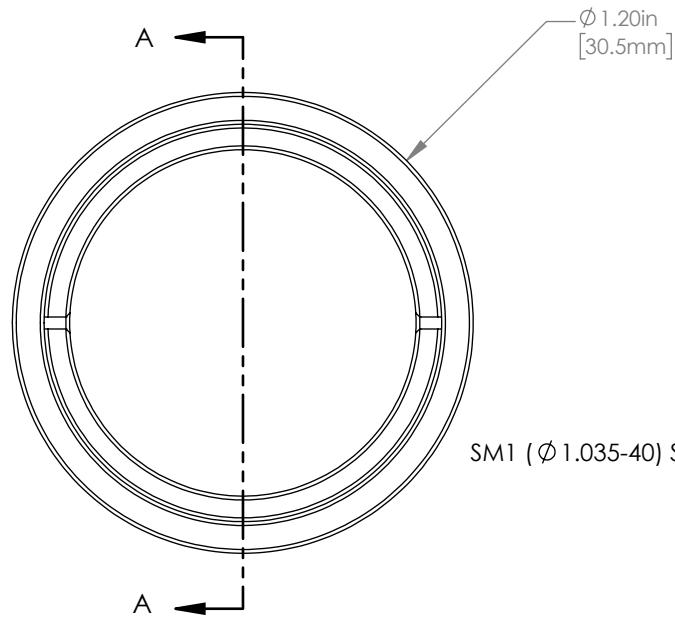


	PART DESCRIPTION	MATERIAL
①	ENGRAVED HOUSING	ANODIZED ALUMINUM
②	SM1RR	ANODIZED ALUMINUM
③	LA4380-UV	UV FUSED SILICA



NOTES/SPECIFICATIONS:

1. DESIGN WAVELENGTH: 587.6 nm
2. FOCAL LENGTH:  $f=100.3\text{ mm} \pm 1\%$
3. WORKING DISTANCE: 93.9 mm
4. CLEAR APERTURE:  $\varnothing 22.9\text{ mm}$
5. SURFACE QUALITY: 40-20 SCRATCH-DIG
6. COATING: BBAR 245-400 nm,  $R_{\text{avg}} < 0.5\%$ ,  $0^\circ$  AOI

FOR INFORMATION ONLY  
NOT FOR MANUFACTURING PURPOSES

DRAWING PROJECTION					
	NAME		DATE	<b>THORLABS</b> www.thorlabs.com MOUNTED $\varnothing 25.4\text{ mm}$ , $f = 100.0\text{ mm}$ PLANO CONVEX LENS, UV COATED	
DRAWN	GG		22/AUG/19		
APPROVAL	DD		22/AUG/19	MATERIAL	SEE TABLE
COPYRIGHT © 2019 BY THORLABS				ITEM #	APPROX WEIGHT
VALUES IN PARENTHESIS ARE CALCULATED AND MAY CONTAIN ROUND OFF ERRORS				LA4380-UV-ML	7 g

REV B