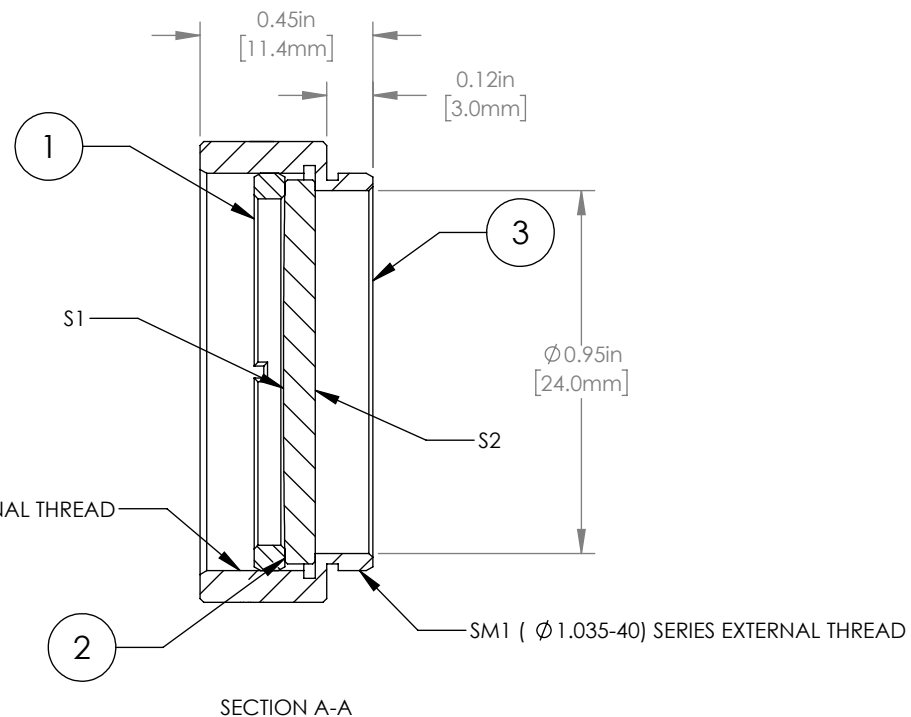
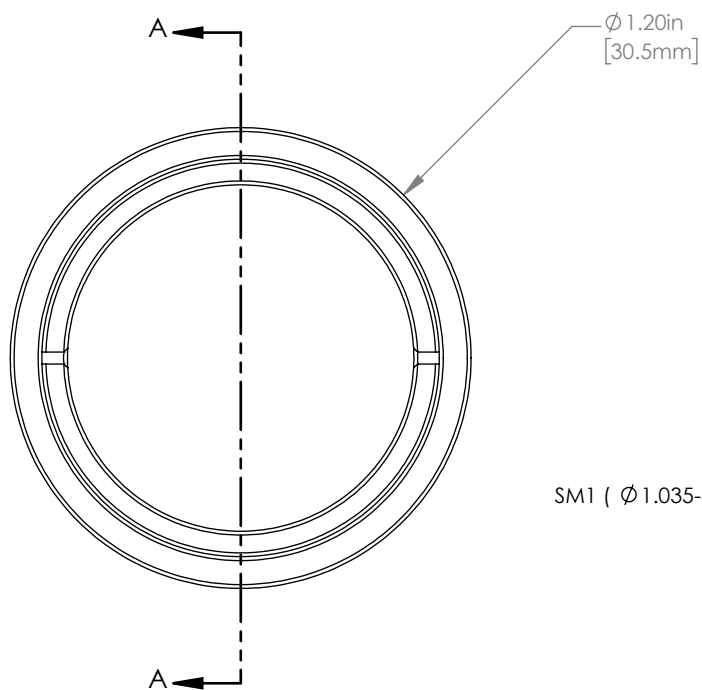


	PART DESCRIPTION	MATERIAL
①	SM1RR	ANODIZED ALUMINUM
②	LA1254	N-BK7
③	ENGRAVED HOUSING	ANODIZED ALUMINUM



NOTES/SPECIFICATIONS:

- DESIGN WAVELENGTH: 587.6 nm
- FOCAL LENGTH:  $f=1500.0\text{ mm} \pm 1\%$
- WORKING DISTANCE (REF): 1494.8 mm
- CLEAR APERTURE:  $\phi 22.9\text{ mm}$
- SURFACE QUALITY: 40-20 SCRATCH-DIG

FOR INFORMATION ONLY  
NOT FOR MANUFACTURING PURPOSES

DRAWING PROJECTION						<b>THORLABS</b> www.thorlabs.com	
NAME	DATE	MOUNTED $\phi 25.4\text{ mm}$ $f=1500.0\text{ mm}$ PLANO CONVEX LENS				REV	
DRAWN	GG	28/AUG/18	MATERIAL				A
APPROVAL	DD	10/SEP/18	SEE TABLE				
COPYRIGHT © 2019 BY THORLABS VALUES IN PARENTHESIS ARE CALCULATED AND MAY CONTAIN ROUND OFF ERRORS						ITEM #	APPROX WEIGHT
						LA1254-ML	8 g