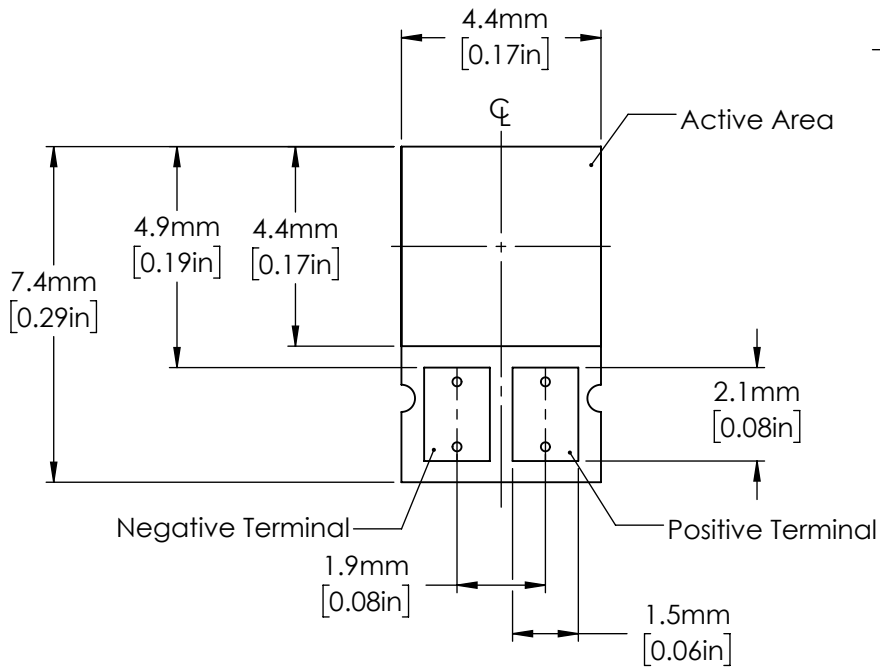
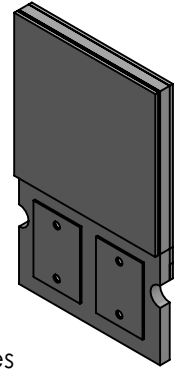
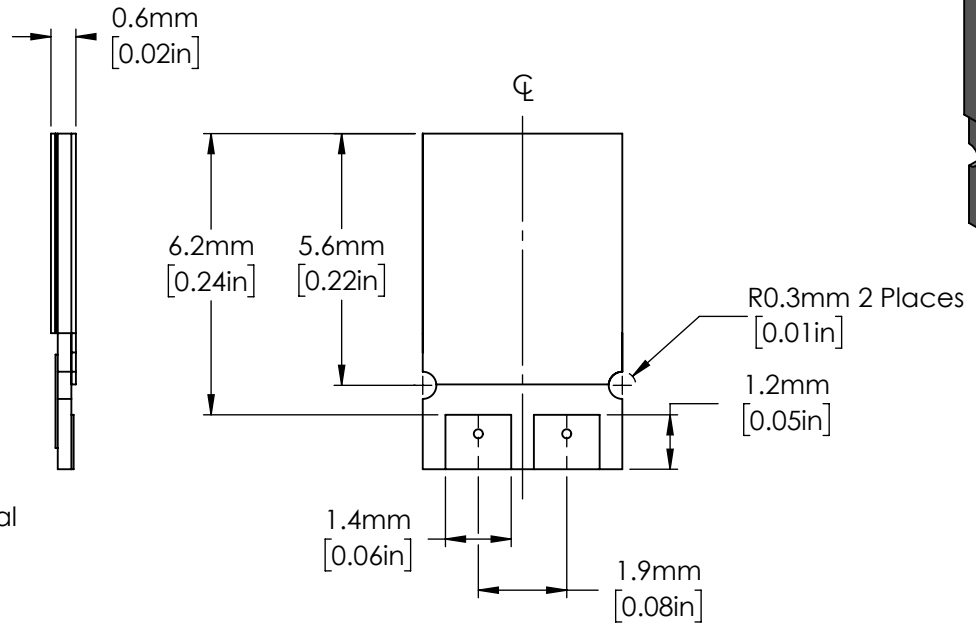


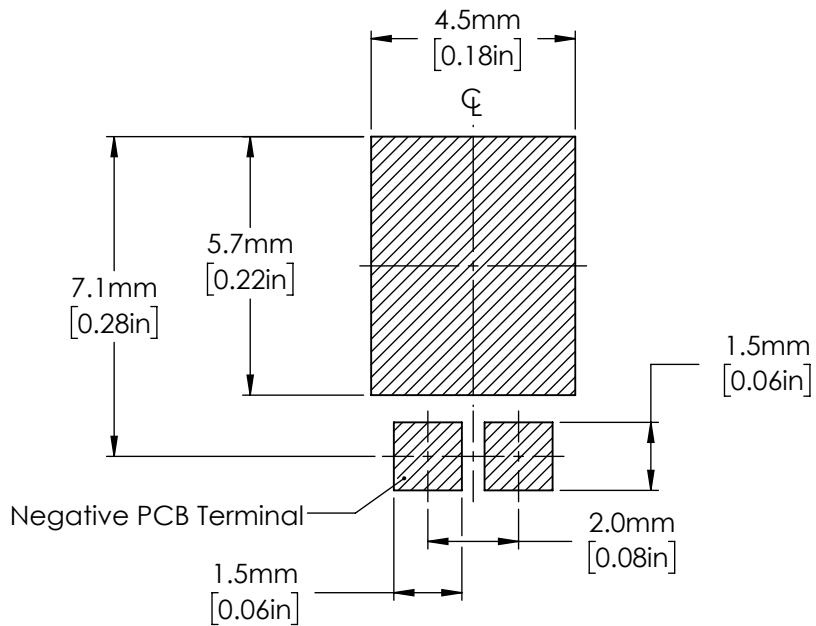
TOP VIEW



BOTTOM VIEW



FOOTPRINT on PCB



When mounting the TD4X to a terminal on a PCB, the contacts should have the specified dimensions.

FOR INFORMATION ONLY  
NOT FOR MANUFACTURING PURPOSES

DRAWING PROJECTION			 www.thorlabs.com	
NAME	DATE	THERMAL DETECTOR		
DRAWN	GO	08/JAN/18	MATERIAL	REV A
APPROVAL	MG	25/JAN/18	N/A	
COPYRIGHT © 2018 BY THORLABS			ITEM #	APPROX WEIGHT
VALUES IN PARENTHESIS ARE CALCULATED AND MAY CONTAIN ROUND OFF ERRORS			TD4X	0.5 g