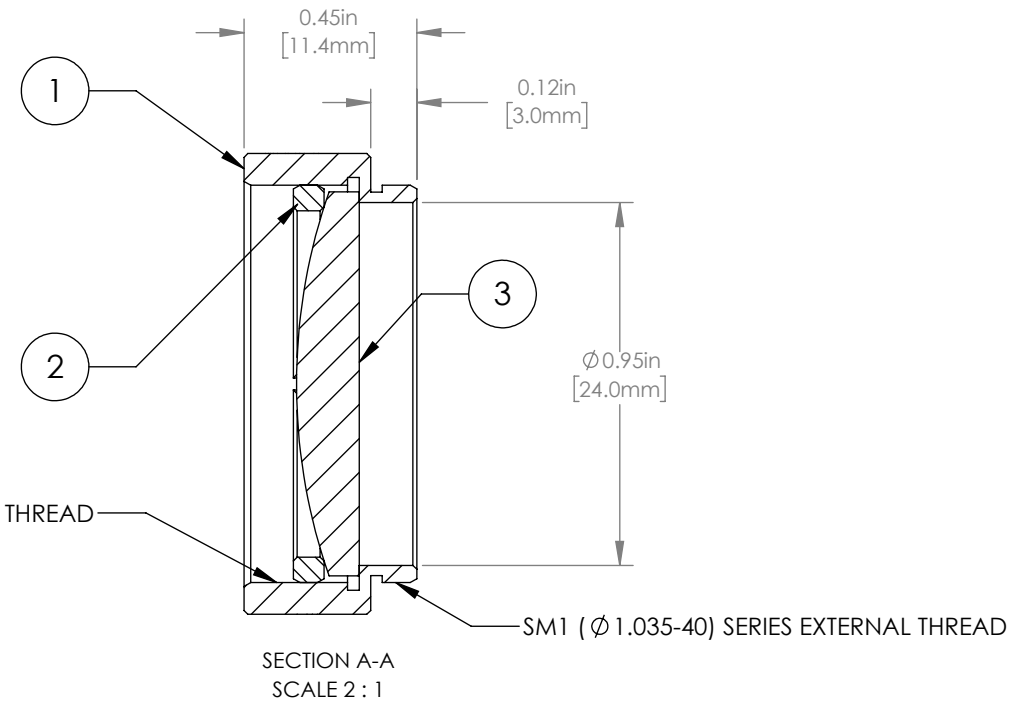
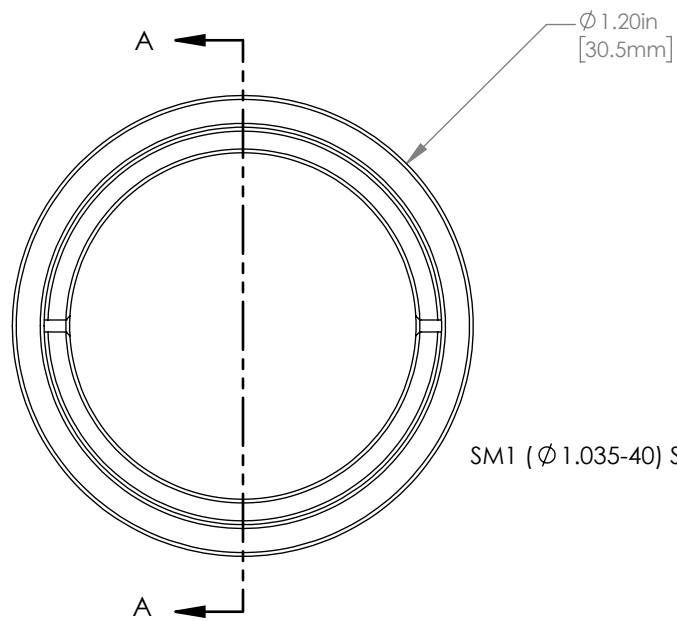


	PART DESCRIPTION	MATERIAL
①	ENGRAVED HOUSING	ANODIZED ALUMINUM
②	SM1RR	ANODIZED ALUMINUM
③	LA1608-B	N-BK7



NOTES/SPECIFICATIONS:

- DESIGN WAVELENGTH: 587.6 nm
- FOCAL LENGTH:  $f=74.8 \text{ mm} \pm 1\%$
- WORKING DISTANCE: 68.2 mm
- CLEAR APERTURE: Ø 22.9 mm
- SURFACE QUALITY: 40-20 SCRATCH-DIG
- COATING: BBAR 650-1050 nm,  $R_{avg} < 0.5\%$ ,  $0^\circ$  AOI

FOR INFORMATION ONLY  
NOT FOR MANUFACTURING PURPOSES

DRAWING PROJECTION			<b>THORLABS</b> www.thorlabs.com	
NAME	DATE	MOUNTED Ø25.4 mm, f = 75.0 mm PLANO CONVEX LENS, B COATED		
DRAWN	GG	22/AUG/19	MATERIAL	
APPROVAL	DD	22/AUG/19	SEE TABLE	REV B
COPYRIGHT © 2019 BY THORLABS			ITEM #	APPROX WEIGHT
VALUES IN PARENTHESIS ARE CALCULATED AND MAY CONTAIN ROUND OFF ERRORS			LA1608-B-ML	10 g