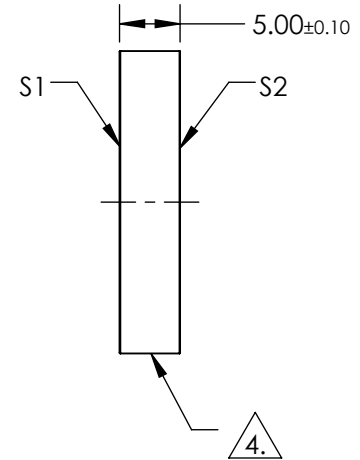
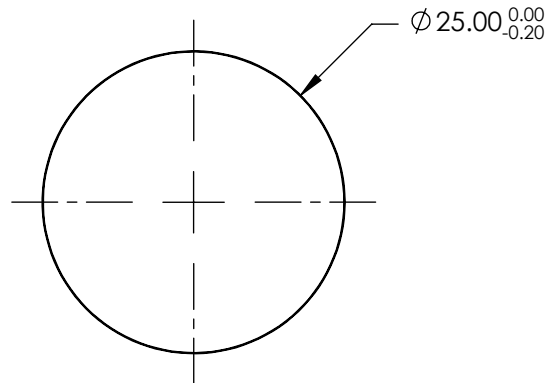


NOTES:

1. SUBSTRATE:
UV GRADE FUSED SILICA
2. COATING (APPLY ACROSS COATING APERTURE):
S1 & S2: VIS-EXT (350-700nm)
R(AVG) ≤ 0.5% FROM 350-700nm @ 0° AOI
3. SURFACE S2 TO BE PARALLEL TO SURFACE S1 TO WITHIN <5 ARCSEC
4. FINE GRIND SURFACE
5. ROHS COMPLIANT

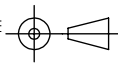


**FOR INFORMATION ONLY:
DO NOT MANUFACTURE
PARTS TO THIS DRAWING**

SPECIFICATIONS SUBJECT TO CHANGE WITHOUT NOTICE
DIMENSIONS ARE FOR REFERENCE ONLY

EO® Edmund Optics®

| | S1 | S2 |
|-----------------|----------------------|----------------------|
| SHAPE | PLANO | PLANO |
| SURFACE QUALITY | 20-10 | 20-10 |
| CLEAR APERTURE | Ø20.00 | Ø20.00 |
| BEVEL | PROTECTIVE AS NEEDED | PROTECTIVE AS NEEDED |

THIRD ANGLE PROJECTION 

ALL DIMS IN mm

| | | | |
|--------|---|-------|--------|
| TITLE | 25mm Dia., 5mm Thick, VIS-EXT Coated $\lambda/10$ Fused Silica Window | | |
| DWG NO | 13339 | SHEET | 1 OF 1 |