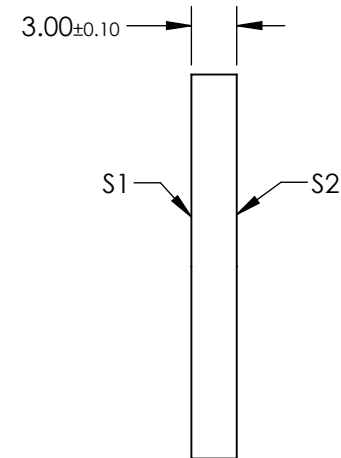
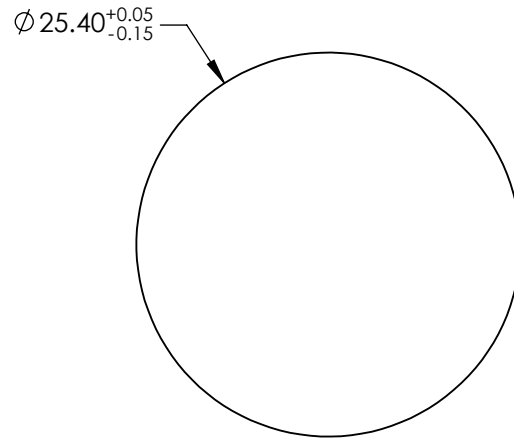


NOTES:

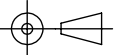
1. SUBSTRATE: FUSED SILICA
2. BEAM MODE: SM OR MM
3. SAMPLED ENERGY: 76
4. SAMPLED ANGLE: 12.69 x 12.69
5. COATING:  
LASER V-COAT (1064nm)
6. BEAM SPECIFICATION:  
MINIMUM BEAM DIAMETER: 0.09mm



**FOR INFORMATION ONLY:  
DO NOT MANUFACTURE  
PARTS TO THIS DRAWING**

SPECIFICATIONS SUBJECT TO CHANGE WITHOUT NOTICE  
DIMENSIONS ARE FOR REFERENCE ONLY

**EO**<sup>®</sup> Edmund Optics<sup>®</sup>

	S1	S2	THIRD ANGLE PROJECTION 		TITLE	1064nm, 25.4mm Dia., 7x7 SPOT MATRIX, DIFFRACTIVE BEAMSPLITTER	
SHAPE	PLANO	PLANO	ALL DIMS IN	mm	DWG NO	14693	SHEET 1 OF 1
MIN CLEAR APERTURE	Ø22.9	Ø22.9					
BEVEL MAX FACE	PROTECTIVE AS NEEDED	PROTECTIVE AS NEEDED					