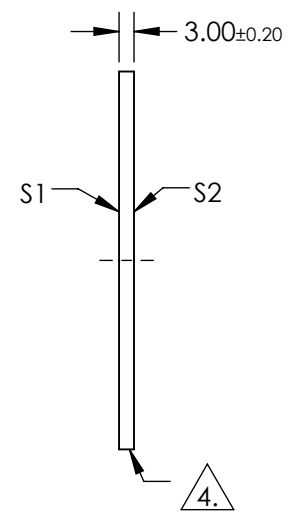
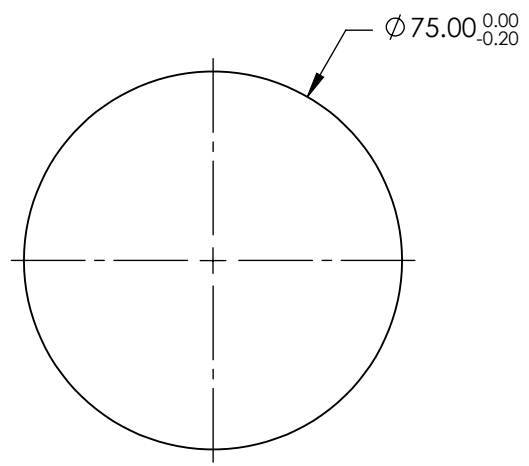


NOTES:

1. SUBSTRATE: UV GRADE FUSED SILICA
2. COATING (APPLY ACROSS COATING APERTURE)  
 S1 & S2: R(ABS) < 0.25% @ 532nm  
 R(ABS) < 0.25% @ 1064nm  
 R(AVG) < 1.0% @ 500 - 1100nm
3. SURFACE S2 TO BE PARALLEL TO SURFACE S1 WITHIN <5 ARCSEC
4. FINE GRIND SURFACE
5. RoHS COMPLIANT




**FOR INFORMATION ONLY:  
DO NOT MANUFACTURE  
PARTS TO THIS DRAWING**

SPECIFICATIONS SUBJECT TO CHANGE WITHOUT NOTICE  
DIMENSIONS ARE FOR REFERENCE ONLY

	S1	S2
SHAPE	PLANO	PLANO
SURFACE QUALITY	20-10	20-10
CLEAR APERTURE	Ø60.00	Ø60.00
BEVEL	PROTECTIVE AS NEEDED	PROTECTIVE AS NEEDED



ALL DIMS IN mm

 <b>Edmund Optics®</b>	
TITLE	75mm DIA., 3mm THICK, YAG-BBAR COATED, λ/10 FUSED SILICA WINDOW
DWG NO	15801
	SHEET 1 OF 1