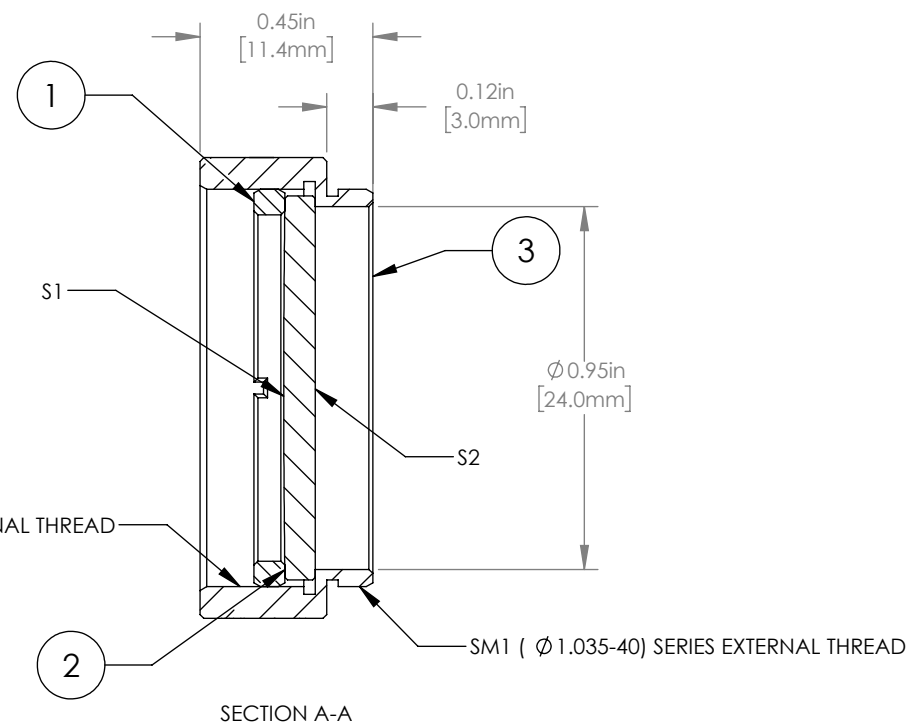
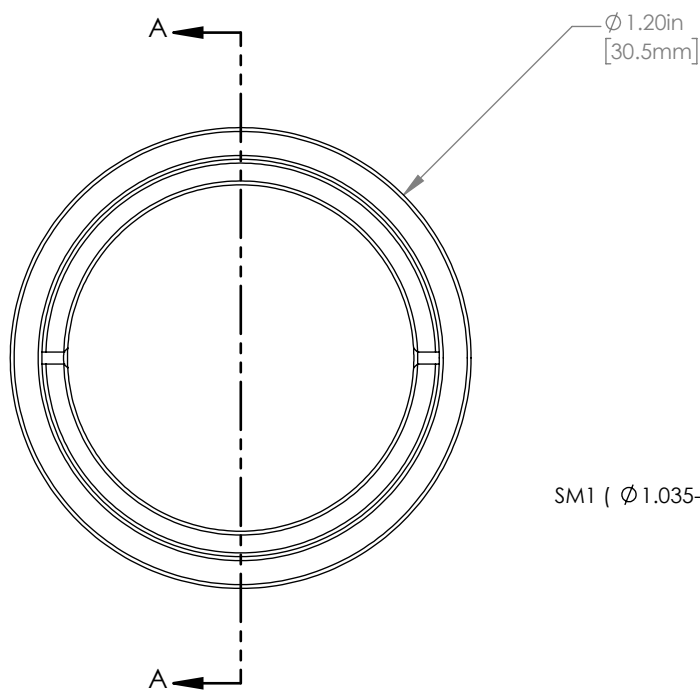


	PART DESCRIPTION	MATERIAL
①	SM1RR	ANODIZED ALUMINUM
②	LA1258-A	N-BK7
③	ENGRAVED HOUSING	ANODIZED ALUMINUM



NOTES/SPECIFICATIONS:

- DESIGN WAVELENGTH: 587.6 nm
- FOCAL LENGTH: $f=2000.0\text{ mm} \pm 1\%$
- WORKING DISTANCE (REF): 1994.8 mm
- CLEAR APERTURE: $\phi 22.9\text{ mm}$
- SURFACE QUALITY: 40-20 SCRATCH-DIG
- COATING (S1 & S2): BBAR 350-700 nm, $R_{\text{avg}} < 0.5\%$, 0° AOI

FOR INFORMATION ONLY
NOT FOR MANUFACTURING PURPOSES

DRAWING PROJECTION			THORLABS www.thorlabs.com	
	NAME	DATE	MOUNTED $\phi 25.4\text{ mm}$ $f=2000.0\text{ mm}$ PLANO CONVEX LENS, -A COATED	
DRAWN	GG	28/AUG/18	MATERIAL	
APPROVAL	DD	10/SEP/18	SEE TABLE	
COPYRIGHT © 2019 BY THORLABS			ITEM #	APPROX WEIGHT
VALUES IN PARENTHESIS ARE CALCULATED AND MAY CONTAIN ROUND OFF ERRORS			LA1258-A-ML	8 g
			REV	A