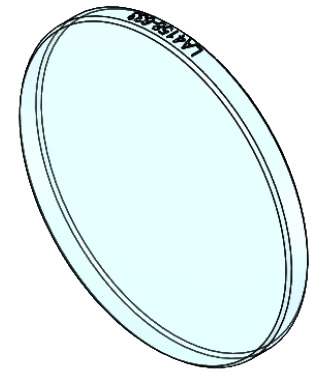


SECTION A-A



ISOMETRIC VIEW  
SCALE: 2:1

NOTES/SPECIFICATIONS:

1. DESIGN WAVELENGTH: 587.6 nm
2. FOCAL LENGTH:  $f=250.9 \text{ mm} \pm 1\%$
3. BACK FOCAL LENGTH(REF):  $bf=249.0 \text{ mm}$
4. CLEAR APERTURE:  $> \varnothing 22.86 \text{ mm}$
5. SURFACE QUALITY: 20-10 SCRATCH-DIG
6. CENTRATION:  $< 3 \text{ arcmin}$
7. DIAMETER TOLERANCE:  $+0.0/-0.1 \text{ mm}$
8. THICKNESS TOLERANCE:  $\pm 0.1 \text{ mm}$
9. COATING: VAR R $<0.25\%$  PER SURFACE FOR 633 nm

FOR INFORMATION ONLY  
NOT FOR MANUFACTURING PURPOSES

DRAWING PROJECTION			<b>THORLABS</b> www.thorlabs.com	
NAME	DATE			
DRAWN	YB	26/NOV/19	$\varnothing 25.4 \text{ mm } f=250 \text{ mm}$ FUSED SILICA PLANO CONVEX LENS, -633 nm COAT	
APPROVAL	ST	11/DEC/19	MATERIAL	REV
COPYRIGHT © 2019 BY THORLABS VALUES IN PARENTHESIS ARE CALCULATED AND MAY CONTAIN ROUND OFF ERRORS			UV FUSED SILICA	A
			ITEM #	APPROX WEIGHT
			LA4158-633	2.61 g