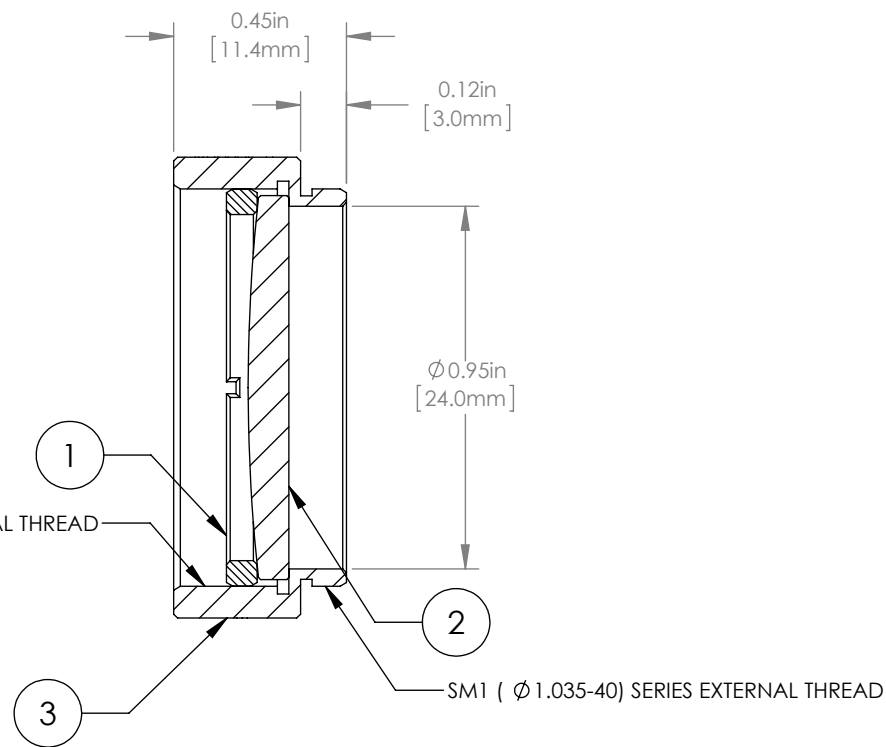
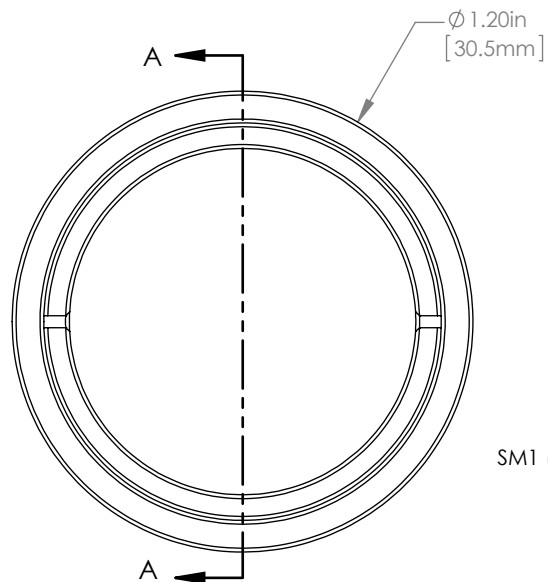


	PART DESCRIPTION	MATERIAL
①	SM1RR	ANODIZED ALUMINUM
②	LA4158-A	UV FUSED SILICA
③	ENGRAVED HOUSING	ANODIZED ALUMINUM



NOTES/SPECIFICATIONS:

- DESIGN WAVELENGTH: 546nm
- FOCAL LENGTH: $f=250.0\text{mm} \pm 1\%$
- WORKING DISTANCE (REF): 244.4mm
- CLEAR APERTURE: $> \text{Ø} 22.86\text{mm}$
- SURFACE QUALITY: 40-20 SCRATCH-DIG
- COATING: BBAR $R_{\text{avg}} < 0.5\%$ FROM 350-700nm, AOI: 0°, ON OUTER OPTICAL SURFACES

FOR INFORMATION ONLY
NOT FOR MANUFACTURING PURPOSES

DRAWING PROJECTION			THORLABS www.thorlabs.com Ø 1" MOUNTED PLANO-CONVEX LENS, f=250mm, -A COAT	
NAME	DATE			
DRAWN	GG	13/OCT/15	MATERIAL SEE TABLE ITEM # LA4158-A-ML APPROX WEIGHT 9 g	
APPROVAL	DD	13/OCT/15		
COPYRIGHT © 2015 BY THORLABS VALUES IN PARENTHESIS ARE CALCULATED AND MAY CONTAIN ROUND OFF ERRORS				