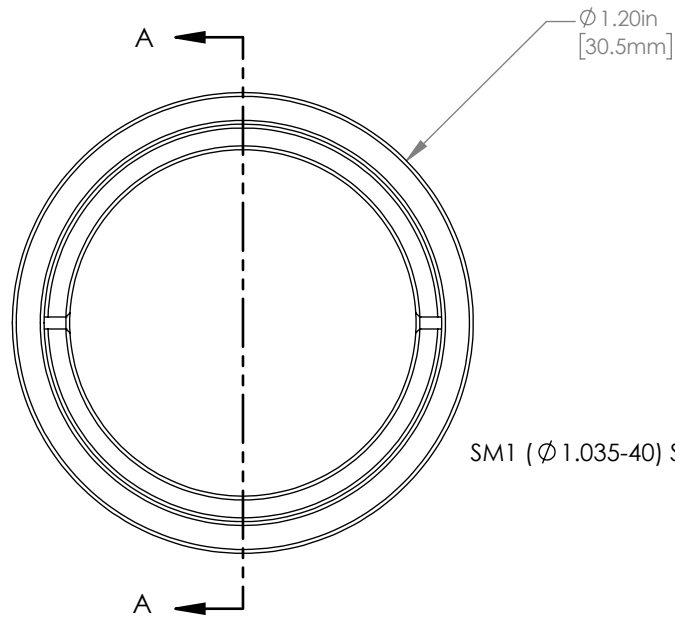
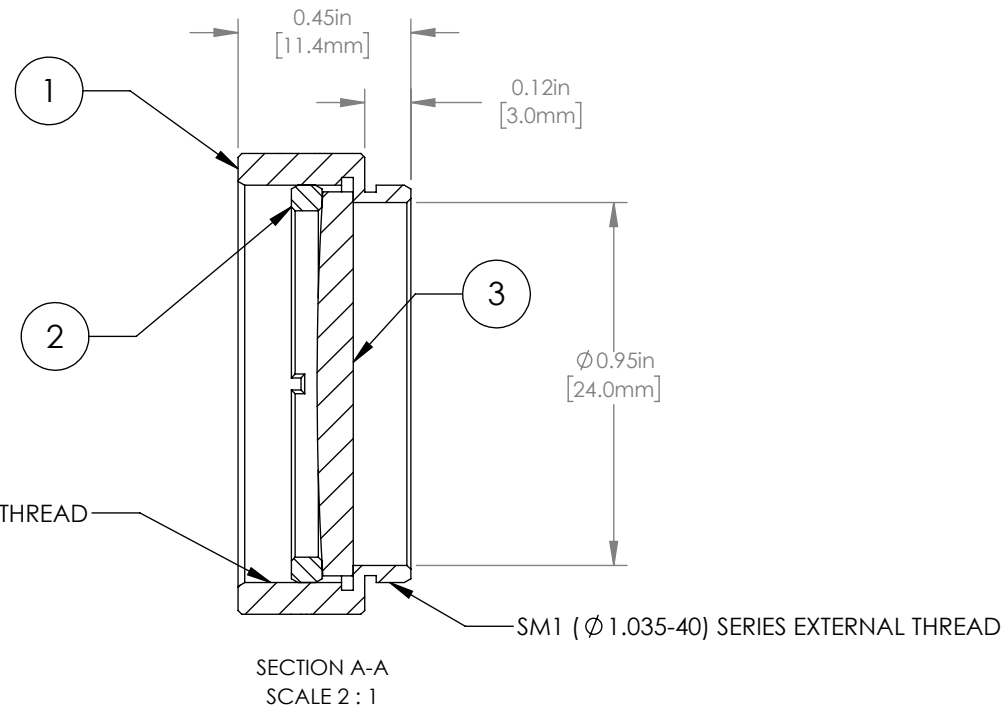


	PART DESCRIPTION	MATERIAL
①	ENGRAVED HOUSING	ANODIZED ALUMINUM
②	SM1RR	ANODIZED ALUMINUM
③	LA1172	N-BK7



SM1 ( $\varnothing 1.035-40$ ) SERIES INTERNAL THREAD



NOTES/SPECIFICATIONS:

- DESIGN WAVELENGTH: 587.6 nm
- FOCAL LENGTH:  $f=398.7\text{ mm} \pm 1\%$
- WORKING DISTANCE: 393.3 mm
- CLEAR APERTURE:  $\varnothing 22.9\text{ mm}$
- SURFACE QUALITY: 40-20 SCRATCH-DIG

FOR INFORMATION ONLY  
 NOT FOR MANUFACTURING PURPOSES

DRAWING PROJECTION				<b>THORLABS</b> www.thorlabs.com	
NAME	DATE	MOUNTED $\varnothing 25.4\text{ mm}$ , $f = 400.0\text{ mm}$		PLANO CONVEX LENS	
DRAWN	GG	22/AUG/19	MATERIAL		REV
APPROVAL	DD	22/AUG/19	SEE TABLE		B
COPYRIGHT © 2019 BY THORLABS		ITEM #	APPROX WEIGHT		
VALUES IN PARENTHESIS ARE CALCULATED AND MAY CONTAIN ROUND OFF ERRORS		LA1172-ML	8 g		