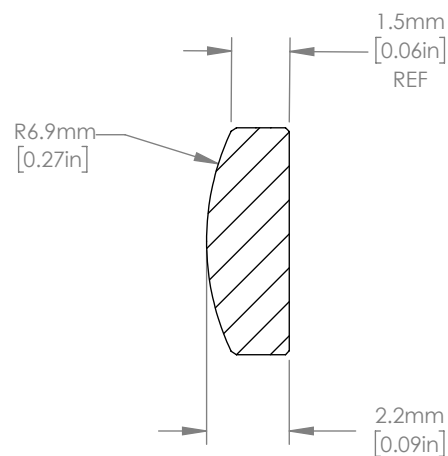
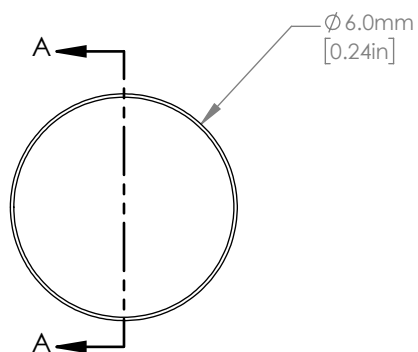




ISOMETRIC VIEW
SCALE: 5:1



SECTION A-A

NOTES/SPECIFICATIONS:

1. DESIGN WAVELENGTH: 587.6 nm
2. FOCAL LENGTH: $f=15.1 \text{ mm} \pm 1\%$
3. BACK FOCAL LENGTH(REF): $bf=13.6 \text{ mm}$
4. CLEAR APERTURE: $> \varnothing 5.4 \text{ mm}$
5. SURFACE QUALITY: 40-20 SCRATCH-DIG
6. CENTRATION: $< 3 \text{ arcmin}$
7. DIAMETER TOLERANCE: $+0.0/-0.1 \text{ mm}$
8. THICKNESS TOLERANCE: $\pm 0.1 \text{ mm}$
9. COATING: BBAR $R_{avg} < 0.5\%$ FROM 350-700 nm, AOI: 0°

FOR INFORMATION ONLY
NOT FOR MANUFACTURING PURPOSES

DRAWING PROJECTION			 www.thorlabs.com $\varnothing 6.0 \text{ mm } f=15.1 \text{ mm}$ FUSED SILICA PLANO CONVEX LENS, -A COAT	
NAME	DATE			
DRAWN	YB	25/JUN/21	MATERIAL UV FUSED SILICA	
APPROVAL	DS	27/AUG/21		
COPYRIGHT © 2021 BY THORLABS VALUES IN PARENTHESIS ARE CALCULATED AND MAY CONTAIN ROUND OFF ERRORS			ITEM #	APPROX WEIGHT
			LA4917-A	0.11 g