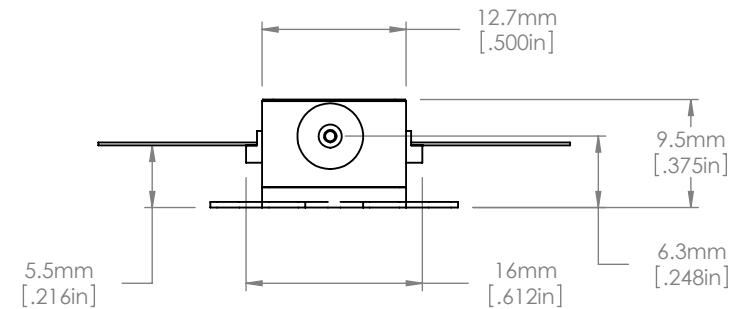
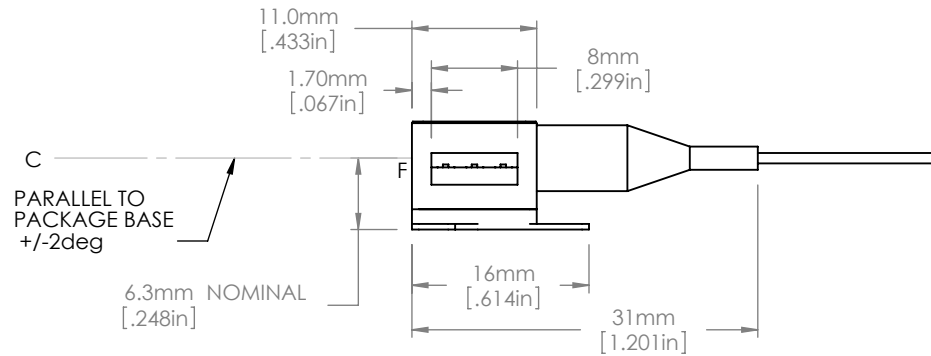


PIN IDENTIFICATION

1. TEC +
2. Thermistor
3. Thermistor
4. Dev Anode
5. Dev Cathode
6. TEC -



NOTES :

1. F DENOTES EMISSION POINT FROM CHIP FACET
C DENOTES CENTRAL AXIS FOR EMERGENT BEAM
2. DEVICE IS PROVIDED WITH A 1500mm LENGTH FIBER TAIL TERMINATED IN AN FC/APC CONNECTOR; THE FIBER IS THORLABS SM2000 TYPE PROTECTED BY 900um DIAMETER LOOSE TUBE

FOR INFORMATION ONLY
NOT FOR MANUFACTURING PURPOSES

DRAWING PROJECTION				 www.thorlabs.com	
NAME	DATE	SAF Gain Chip Assembly (1900nm)			REV A
DRAWN AD	20/JAN/11				
APPROVAL JW	20/JAN/11	MATERIAL N/A			
COPYRIGHT © 2011 BY THORLABS					
VALUES IN PARENTHESIS ARE CALCULATED AND MAY CONTAIN ROUND OFF ERRORS		ITEM #	SAF1900S	APPROX WEIGHT 0.018 kg	