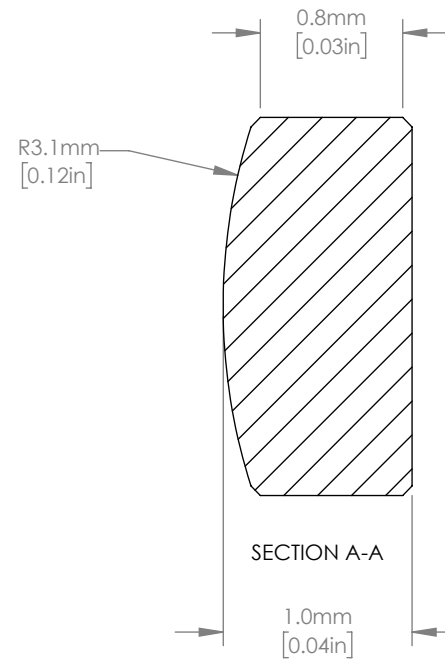
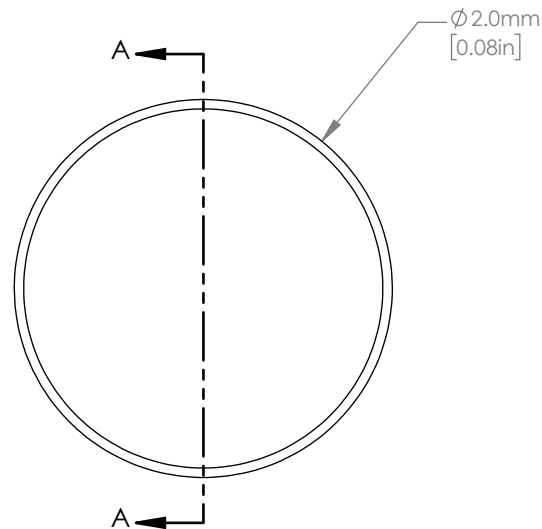


25:1 ISOMETRIC VIEW FOR REFERENCE ONLY



NOTES/SPECIFICATIONS:

1. DESIGN WAVELENGTH: 587.6nm
2. FOCAL LENGTH:  $f=4.0\text{mm} \pm 1\%$
3. BACK FOCAL LENGTH (REF):  $bf=3.44\text{mm}$
4. CLEAR APERTURE:  $>1.8\text{mm}$
5. SURFACE QUALITY: 60-40 SCRATCH-DIG
6. CENTRATION:  $\leq 5$  arcmin
7. DIAMETER TOLERANCE:  $+0.00/-0.02\text{mm}$
8. THICKNESS TOLERANCE:  $\pm 0.03\text{mm}$

FOR INFORMATION ONLY  
NOT FOR MANUFACTURING PURPOSES

DRAWING PROJECTION			<b>THORLABS</b> www.thorlabs.com $\varnothing 2\text{mm } f=4\text{mm N-SF11}$ PLANO CONVEX LENS	
NAME	DATE			
DRAWN	YB	24/JAN/19	MATERIAL	
APPROVAL	NE	24/JAN/19	N-SF11	REV A
COPYRIGHT © 2019 BY THORLABS VALUES IN PARENTHESIS ARE CALCULATED AND MAY CONTAIN ROUND OFF ERRORS			ITEM #	APPROX WEIGHT
			LA2024	0.009 g