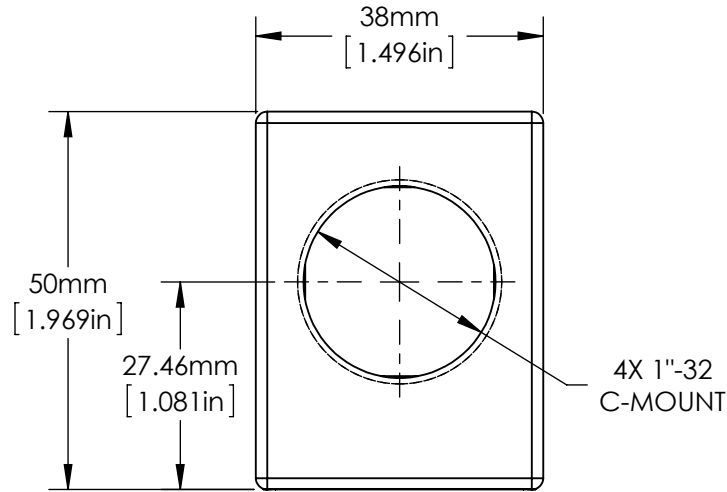
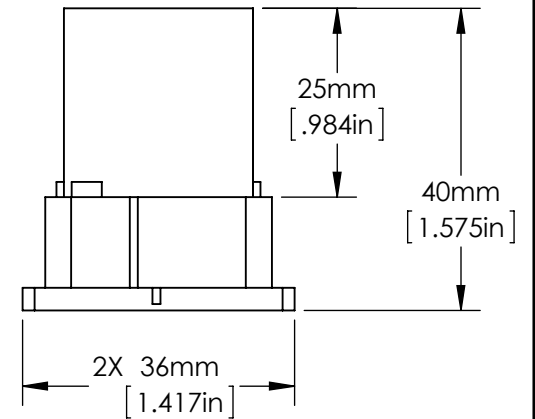


NOTES:

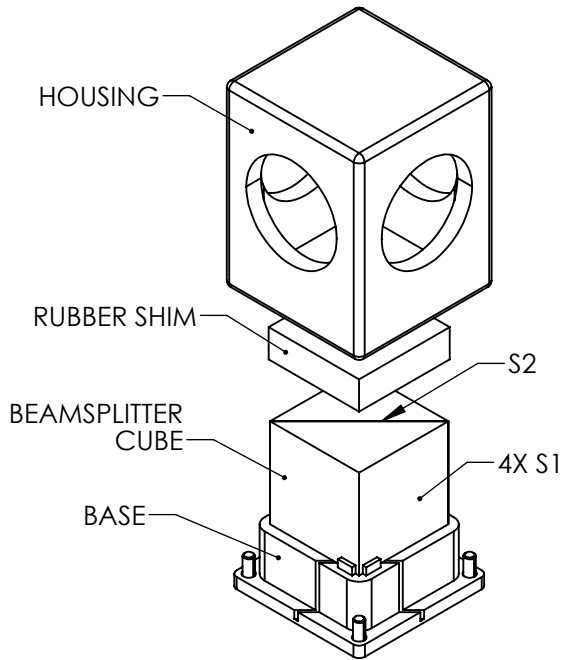
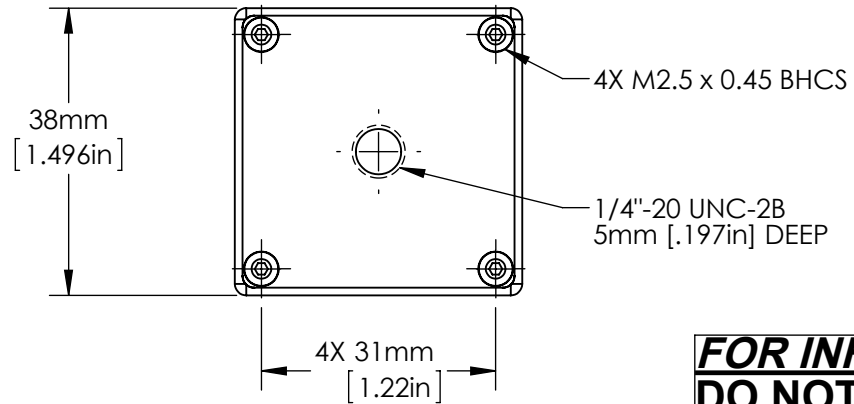
1. BEAMSPLITTER SUBSTRATE MATERIAL:  
SCHOTT: N-BK7 517/642  
EQUIVALENT SUBSTITUTIONS ALLOWED  
  
HOUSING MATERIAL: BLACK ANODIZED ALUMINUM
2. CENTERING TOLERANCE (AT 587.6nm):  
CUBE BEAM DEVIATION: <2 arc min.
3. COATING (APPLY ACROSS CLEAR APERTURE)  
COATING SPECIFICATIONS APPLY FROM 430 TO 670nm  
S1: R(AVG) <0.5%  
S2: MULTILAYER DIELECTRIC TO ACHIEVE  
TRANSMISSION > 45% ± 5%  
ABSORPTION < 10%  
POLARIZATION < 6%
4. INCLUDES 1 REMOVEABLE CAP (NOT SHOWN)



COMPLETE ASSEMBLY




BASE AND BEAMSPLITTER



PARTIAL EXPLODED VIEW

**FOR INFORMATION ONLY:  
DO NOT MANUFACTURE  
PARTS TO THIS DRAWING**

SPECIFICATIONS SUBJECT TO CHANGE WITHOUT NOTICE  
DIMENSIONS ARE FOR REFERENCE ONLY

|                                   |                 |                 |                     |    |   |       |                 |
|-----------------------------------|-----------------|-----------------|---------------------|----|---|-------|-----------------|
|                                   | S1              | S2              | EFL<br>(AT 587.6nm) | NA |  <b>Edmund Optics®</b> |       |                 |
| SHAPE                             | PLANO           | PLANO           | BFL<br>(AT 587.6nm) | NA |   |       |                 |
| SURFACE ACCURACY AT 632.8nm (P-V) | 1/8 WAVE        | 1/8 WAVE        | ALL DIMS IN         | mm | DWG NO  | 49682 | SHEET<br>1 OF 1 |
| SURFACE QUALITY                   | 40 - 20         | 40 - 20         |                     |    |   |       |                 |
| MIN CLEAR APERTURE                | 22.50 x 22.50mm | 31.82 x 22.50mm |                     |    |   |       |                 |