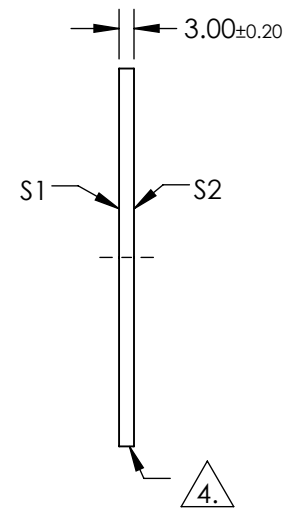
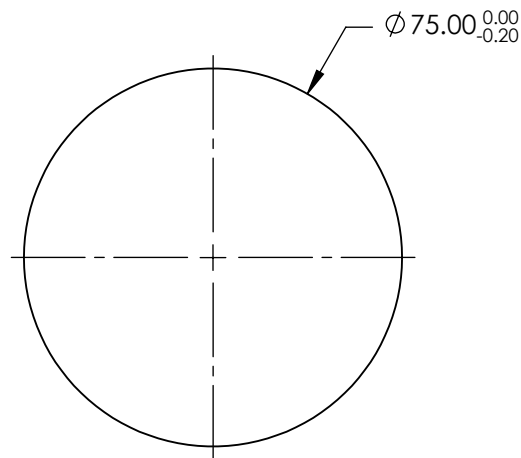


NOTES:

1. SUBSTRATE: UV GRADE FUSED SILICA
2. COATING (APPLY ACROSS COATING APERTURE)
S1 & S2: R(AVG) <0.5% @ 350 - 700nm
3. SURFACE S2 TO BE PARALLEL TO SURFACE S1 WITHIN <5 ARCSEC
4. FINE GRIND SURFACE
5. RoHS COMPLIANT



**FOR INFORMATION ONLY:
DO NOT MANUFACTURE
PARTS TO THIS DRAWING**

SPECIFICATIONS SUBJECT TO CHANGE WITHOUT NOTICE
DIMENSIONS ARE FOR REFERENCE ONLY

| | S1 | S2 |
|-----------------|----------------------|----------------------|
| SHAPE | PLANO | PLANO |
| SURFACE QUALITY | 20-10 | 20-10 |
| CLEAR APERTURE | Ø60.00 | Ø60.00 |
| BEVEL | PROTECTIVE AS NEEDED | PROTECTIVE AS NEEDED |



ALL DIMS IN

mm

EO® Edmund Optics®

TITLE

75mm DIA., 3mm THICK, VIS-EXT COATED,
λ/10 FUSED SILICA WINDOW

DWG NO

15799

SHEET
1 OF 1