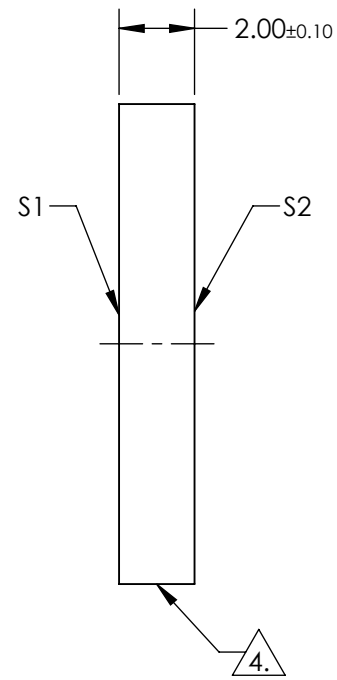
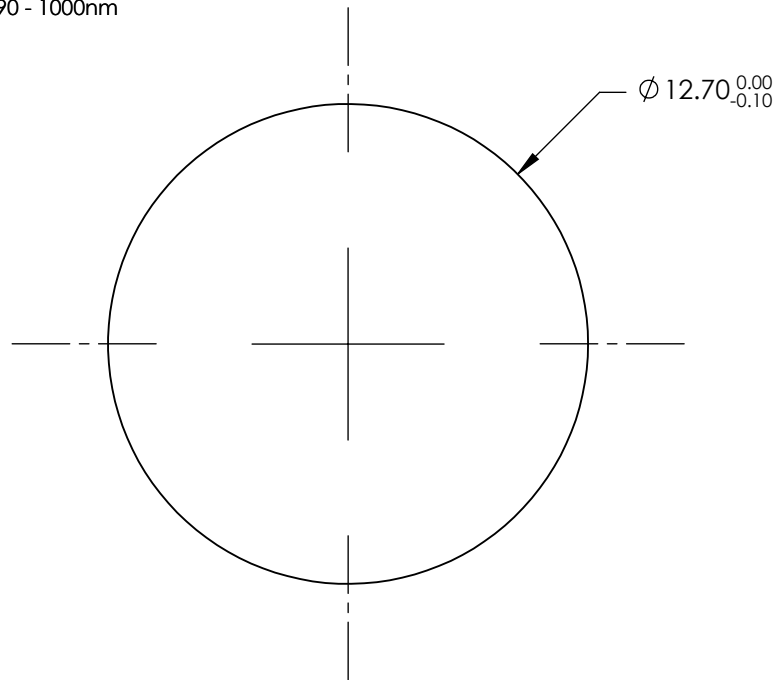


NOTES:

1. SUBSTRATE: CALCIUM FLUORIDE (CAF₂) VACUUM UV GRADE
2. SURFACE S1 TO BE PARALLEL WITH SURFACE S2 TO <1 ARCMIN
3. COATING (APPLY ACROSS CLEAR APERTURE)

S1 & S2: R(ABS) ≤0.25% @ 880nm
 R(AVG) ≤1.25% @ 400 - 870nm
 R(AVG) ≤1.25% @ 890 - 1000nm

4. FINE GRIND SURFACE



**FOR INFORMATION ONLY:
 DO NOT MANUFACTURE
 PARTS TO THIS DRAWING**

SPECIFICATIONS SUBJECT TO CHANGE WITHOUT NOTICE
 DIMENSIONS ARE FOR REFERENCE ONLY

	S1	S2
SHAPE	PLANO	PLANO
SURFACE FLATNES	λ/2	λ/2
SURFACE QUALITY	40-20	40-20
CLEAR APERTURE	Ø 11.43	Ø 11.43
BEVEL	PROTECTED AS NEEDED	PROTECTED AS NEEDED



ALL DIMS IN mm

EO® Edmund Optics®

TITLE 12.7mm Diameter, VIS-NIR Coated, Calcium Fluoride Window

DWG NO 17602 SHEET 1 OF 1