

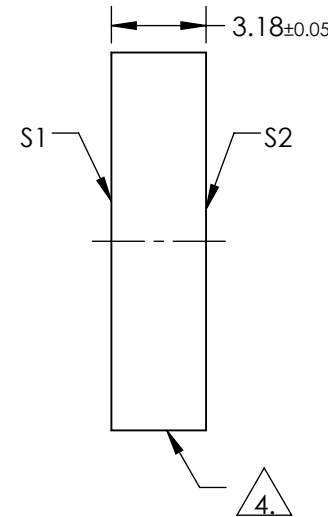
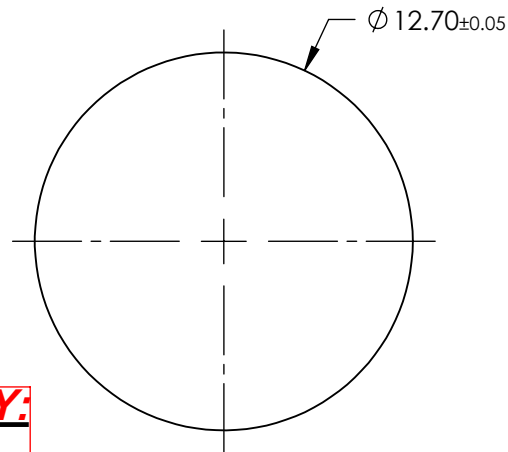
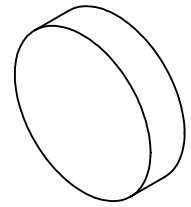
NOTES:

1. SUBSTRATE: OPTICAL GRADE SAPPHIRE (Al<sub>2</sub>O<sub>3</sub>)
2. SURFACE S2 TO BE PARALLEL TO SURFACE S1 TO WITHIN <3.5 ARCMIN
3. COATING (APPLY ACROSS COATING APERTURE):

S1 & S2: R(ABS) ≤ 1.25% from 750 - 800nm  
 R(ABS) ≤ 1.0% from 800 - 1550nm  
 R(AVG) ≤ 0.7% from 750 - 1550nm

4. GRIND SURFACE

5. RoHS: COMPLIANT



**FOR INFORMATION ONLY:  
DO NOT MANUFACTURE  
PARTS TO THIS DRAWING**

SPECIFICATIONS SUBJECT TO CHANGE WITHOUT NOTICE  
 DIMENSIONS ARE FOR REFERENCE ONLY

	S1	S2
SHAPE	PLANO	PLANO
SURFACE QUALITY	80-50	80-50
SURFACE FLATNESS @ 632.8nm	2λ	2λ
SURFACE ROUGHNESS (μm/in)	0.1	0.1
BIREFRINGENCE	0.008	0.008
CLEAR APERTURE	Ø11.43	Ø11.43
BEVEL	PROTECTIVE AS NEEDED	PROTECTIVE AS NEEDED



THIRD ANGLE PROJECTION	TITLE	Window Saph 12.7 Dia NIR II Ctd	
ALL DIMS IN	DWG NO	39263	SHEET 1 OF 1