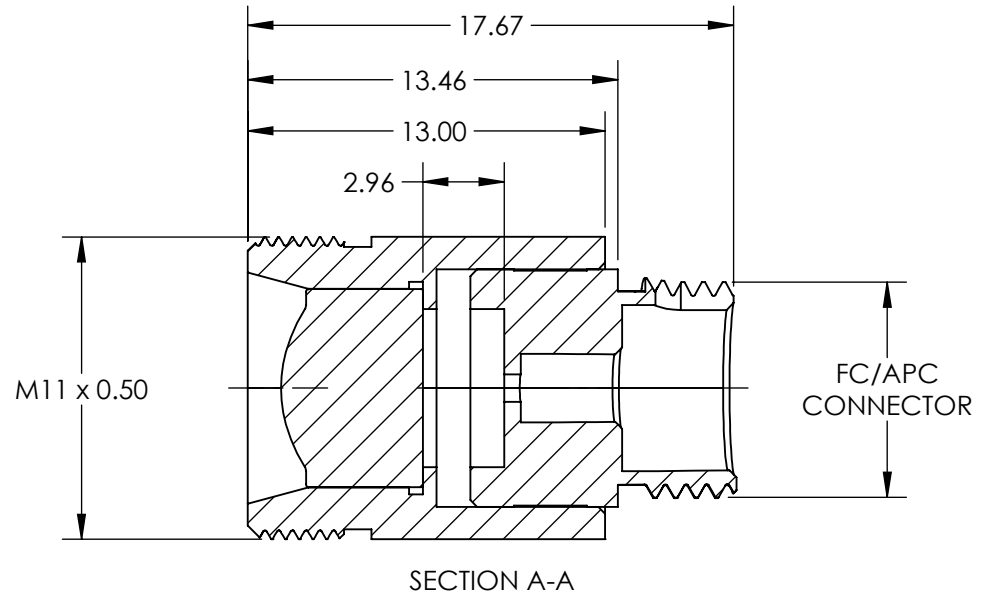
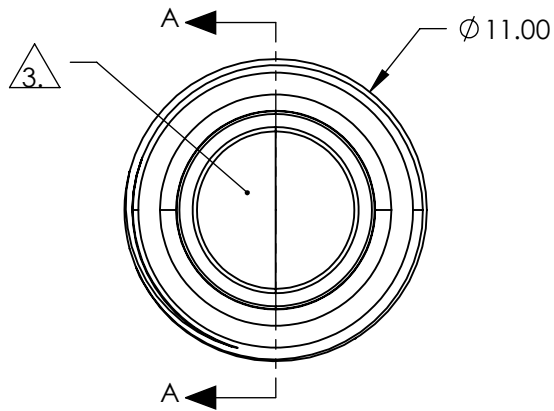
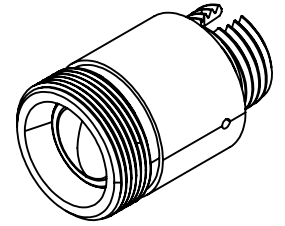


NOTES:

1. MATERIAL:
HOUSING: STAINLESS STEEL
LENS: D-ZLGF52LA
2. COATING (APPLY ACROSS COATING APERTURE)
BBAR (600-1050nm)
Rabs <1.0% @ 600 - 1050nm

3. CLEAR APERTURE: 5.00 mm

4. RoHS: COMPLIANT



SPECIFICATIONS SUBJECT TO CHANGE WITHOUT NOTICE
DIMENSIONS ARE FOR REFERENCE ONLY

**FOR INFORMATION ONLY:
DO NOT MANUFACTURE
PARTS TO THIS DRAWING**

EO® Edmund Optics®

| | | | | |
|------------------------|----|--------|--|-----------------|
| THIRD ANGLE PROJECTION | | TITLE | 633nm Alignment, 0.40 NA Fiber Collimator w/ FC/APC Connector | |
| ALL DIMS IN | mm | DWG NO | 13554 | SHEET 1 OF 1 |