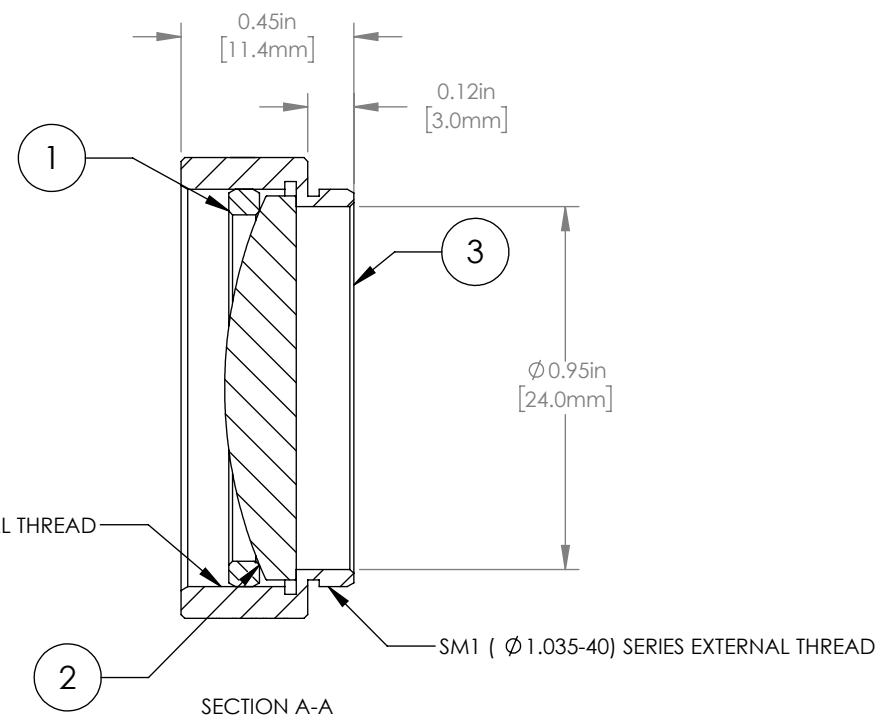
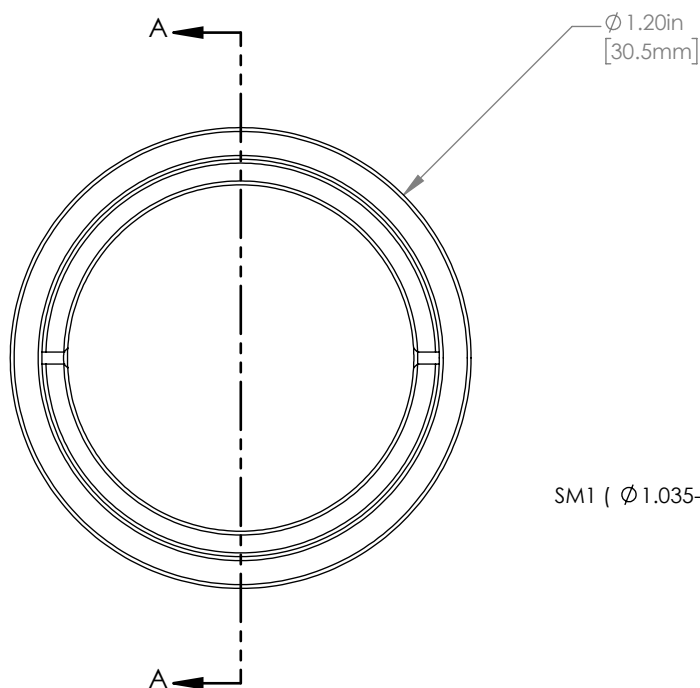


	PART DESCRIPTION	MATERIAL
①	SM1RR	ANODIZED ALUMINUM
②	LA1134-C	N-BK7
③	ENGRAVED HOUSING	ANODIZED ALUMINUM



NOTES/SPECIFICATIONS:

- DESIGN WAVELENGTH: 587.6 nm
- FOCAL LENGTH:  $f=59.8\text{ mm} \pm 1\%$
- WORKING DISTANCE (REF): 52.9 mm
- CLEAR APERTURE:  $\phi 22.9\text{ mm}$
- SURFACE QUALITY: 40-20 SCRATCH-DIG
- COATING: BBAR  $<0.5\%$  FROM 1050 nm-1700 nm,  $0^\circ$  AOI, ON BOTH OPTICAL SURFACES

FOR INFORMATION ONLY  
NOT FOR MANUFACTURING PURPOSES

DRAWING PROJECTION						<b>THORLABS</b> www.thorlabs.com	
	NAME		DATE	MOUNTED $\phi 1''$ $f=60\text{ mm}$			
DRAWN	GG		20/JAN/20	PLANO CONVEX LENS, -C COATED			
APPROVAL	DD		20/JAN/20	MATERIAL			
<b>COPYRIGHT © 2020 BY THORLABS</b>				SEE TABLE		REV A	
VALUES IN PARENTHESIS ARE CALCULATED AND MAY CONTAIN ROUND OFF ERRORS				ITEM #		APPROX WEIGHT	
				LA1134-C-ML		14 g	