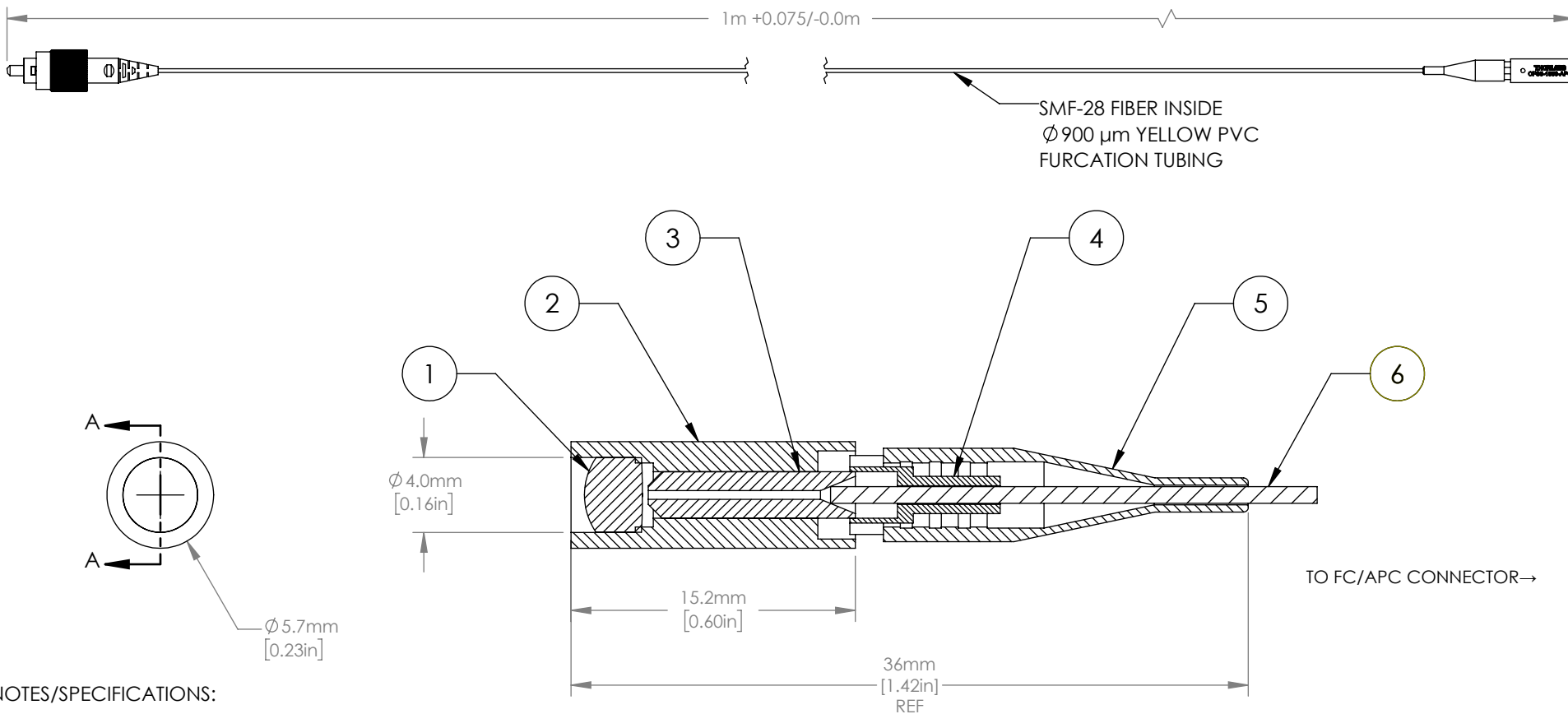


ITEM	PART	MATERIAL
1	∅ 4.00mm, f=4.73 mm LENS	MOLDED ASPHERE
2	LENS CELL	303 STAINLESS
3	FERRULE	ZIRCONIA
4	STEM	303 STAINLESS
5	FIBER STRAIN RELIEF BOOT	TPR
6	TUBING	HYTREL



NOTES/SPECIFICATIONS:

- DESIGN WAVELENGTH: 1550 nm
- FULL ANGLE BEAM DIVERGENCE: 2.20 mrad +0.17/-0.00 mrad
- 1/e<sup>2</sup> BEAM DIAMETER: 0.90 mm
- FIBER TYPE: SMF-28-J9
- FIBER LENGTH: 1 m
- RETURN LOSS: 55 dB
- FIBER MODE FIELD DIAMETER: 10.4 µm
- CONNECTOR TYPE: FC/APC 8° POLISH
- AR COATING (LENS): BBAR 1050-1700 nm, R<sub>avg</sub> < 0.5%
- AR COATING (FERRULE): 1550 ± 15 nm, R < 0.25%

FOR INFORMATION ONLY  
NOT FOR MANUFACTURING PURPOSES

DRAWING PROJECTION			 www.thorlabs.com PIGTAILED ASPHERIC COLLIMATOR, EFL = 4.73 mm, 1550 nm, FC/APC	
	NAME	DATE		
DRAWN	NI	09/AUG/22	MATERIAL	
APPROVAL	VP	11/AUG/22		
COPYRIGHT © 2022 BY THORLABS			SEE TABLE	
VALUES IN PARENTHESIS ARE CALCULATED AND MAY CONTAIN ROUND OFF ERRORS			ITEM #	APPROX WEIGHT
			CFS5-1550-APC	5.6 g
			REV	D