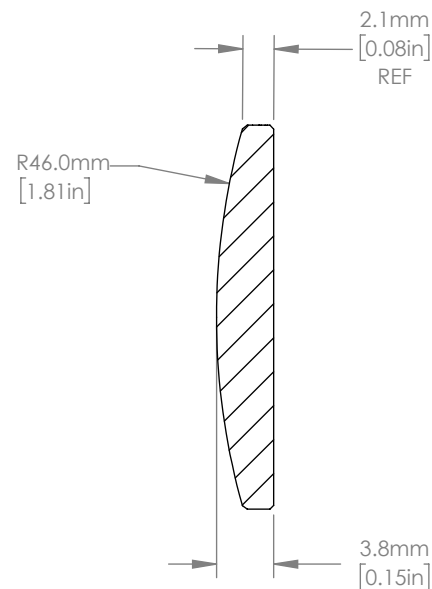
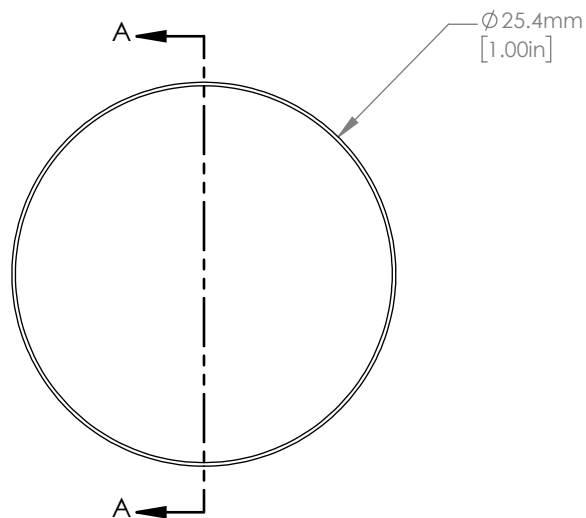


ISOMETRIC VIEW
SCALE: 2:1



SECTION A-A

NOTES/SPECIFICATIONS:

1. DESIGN WAVELENGTH: 587.6 nm
2. FOCAL LENGTH: $f=100.3\text{ mm} \pm 1\%$
3. BACK FOCAL LENGTH(REF): $bf=97.7\text{ mm}$
4. CLEAR APERTURE: $> \varnothing 22.86\text{ mm}$
5. SURFACE QUALITY: 20-10 SCRATCH-DIG
6. CENTRATION: $< 3\text{arcmin}$
7. DIAMETER TOLERANCE: $+0.0/-0.1\text{ mm}$
8. THICKNESS TOLERANCE: $\pm 0.1\text{ mm}$
9. COATING: VAR R $<0.25\%$ PER SURFACE FOR 405 nm, AOI: 0°

FOR INFORMATION ONLY
NOT FOR MANUFACTURING PURPOSES

DRAWING PROJECTION			THORLABS www.thorlabs.com	
	NAME	DATE		
DRAWN	YB	04/JAN/21	$\varnothing 25.4\text{ mm } f=100\text{ mm}$ FUSED SILICA PLANO CONVEX LENS, -405 nm COAT	
APPROVAL	MG	08/JAN/21	MATERIAL	REV
COPYRIGHT © 2021 BY THORLABS			UV FUSED SILICA	A
VALUES IN PARENTHESIS ARE CALCULATED AND MAY CONTAIN ROUND OFF ERRORS			ITEM # LA4380-405	APPROX WEIGHT 3.22 g