

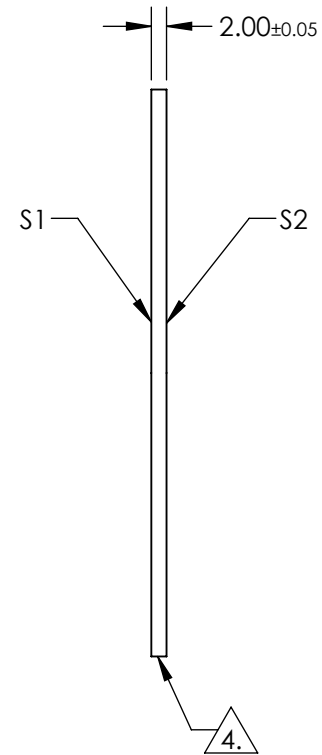
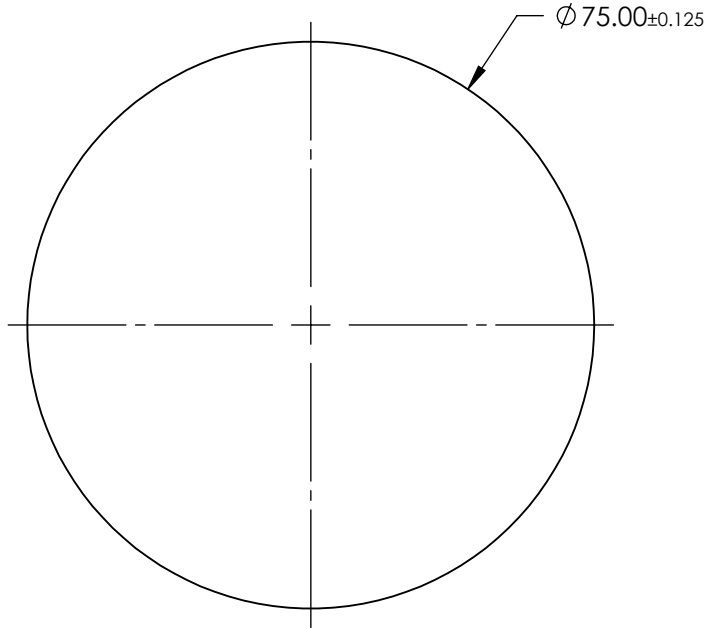
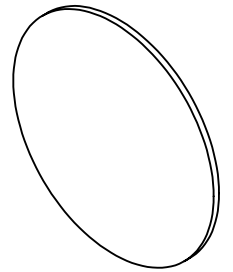
NOTES:

1. SUBSTRATE: Sapphire (Al_2O_3)
2. SURFACE S1 TO BE PARALLEL WITH SURFACE S2 TO WITHIN ≤ 3.5 ARCMIN
3. COATING (APPLY ACROSS CLEAR APERTURE)

S1 & S2: $R(ABS) \leq 1.5\%$ @ 750 - 800nm
 $R(ABS) \leq 1.0\%$ @ 800 - 1550nm
 $R(AVG) \leq 0.7\%$ @ 750 - 1550nm

4. FINE GRIND SURFACE

5. ROHS COMPLIANT



**FOR INFORMATION ONLY:
DO NOT MANUFACTURE
PARTS TO THIS DRAWING**

SPECIFICATIONS SUBJECT TO CHANGE WITHOUT NOTICE
DIMENSIONS ARE FOR REFERENCE ONLY

	S1	S2
SHAPE	PLANO	PLANO
SURFACE QUALITY	80-50	80-50
CLEAR APERTURE	Ø 67.50	Ø 67.50
SURFACE FLATNESS	2λ (typical)	2λ (typical)
BEVEL	PROTECTED AS NEEDED	PROTECTED AS NEEDED

THIRD ANGLE PROJECTION

ALL DIMS IN mm

Edmund Optics®

TITLE 75mm Diameter, NIR II AR Coated Sapphire Window

DWG NO 18950 SHEET 1 OF 1