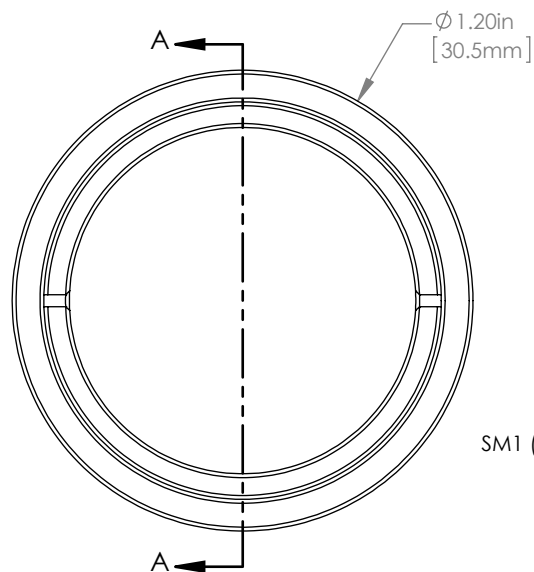
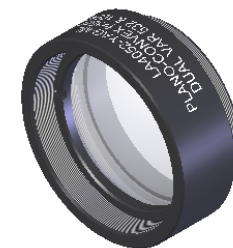
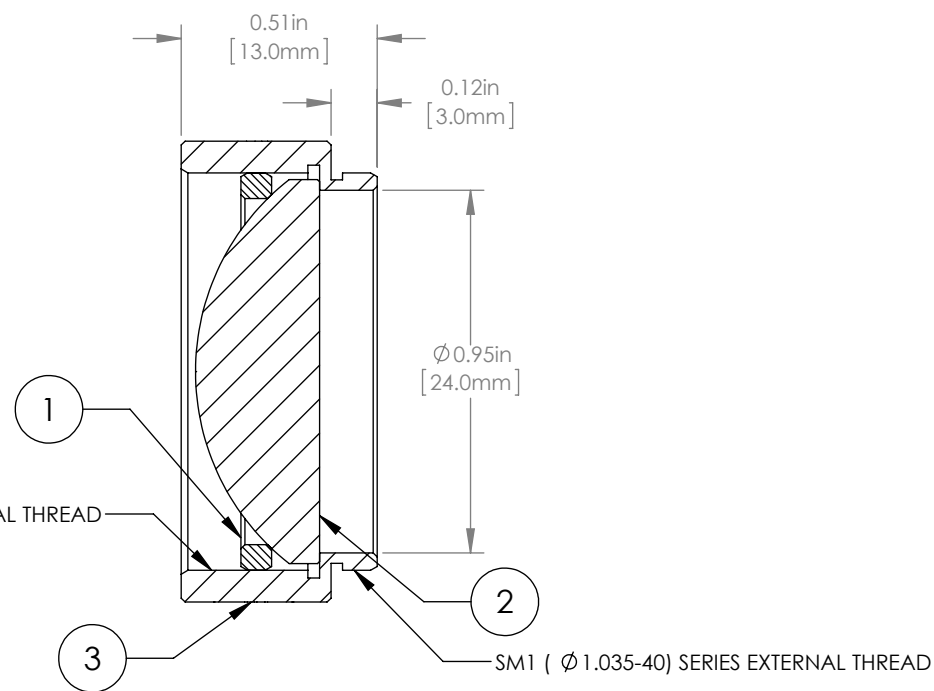


	PART DESCRIPTION	MATERIAL
①	SM1RR	ANODIZED ALUMINUM
②	LA4052-YAG	UV FUSED SILICA
③	ENGRAVED HOUSING	ANODIZED ALUMINUM



SM1 (ϕ 1.035-40) SERIES INTERNAL THREAD



SM1 (ϕ 1.035-40) SERIES EXTERNAL THREAD

NOTES/SPECIFICATIONS:

1. DESIGN WAVELENGTH: 546nm
2. FOCAL LENGTH: $f=35.0\text{mm} \pm 1\%$
3. WORKING DISTANCE (REF): 25.6mm
4. CLEAR APERTURE: $> \phi 22.86\text{mm}$
5. SURFACE QUALITY: 40-20 SCRATCH-DIG
6. COATING: BBAR $R_{\text{avg}} < 0.25\%$ DUAL VAR 532 & 1064nm , AOI: 0° , ON OUTER OPTICAL SURFACES

FOR INFORMATION ONLY
NOT FOR MANUFACTURING PURPOSES

DRAWING PROJECTION			THORLABS www.thorlabs.com ϕ 1" MOUNTED PLANO-CONVEX LENS, $f=35\text{mm}$, YAG-COAT	
NAME	DATE			
DRAWN	GG	13/OCT/15	MATERIAL	
APPROVAL	DD	13/OCT/15		
COPYRIGHT © 2015 BY THORLABS			SEE TABLE	
VALUES IN PARENTHESIS ARE CALCULATED AND MAY CONTAIN ROUND OFF ERRORS			ITEM #	APPROX WEIGHT
			LA4052-YAG-ML	12 g

REV A