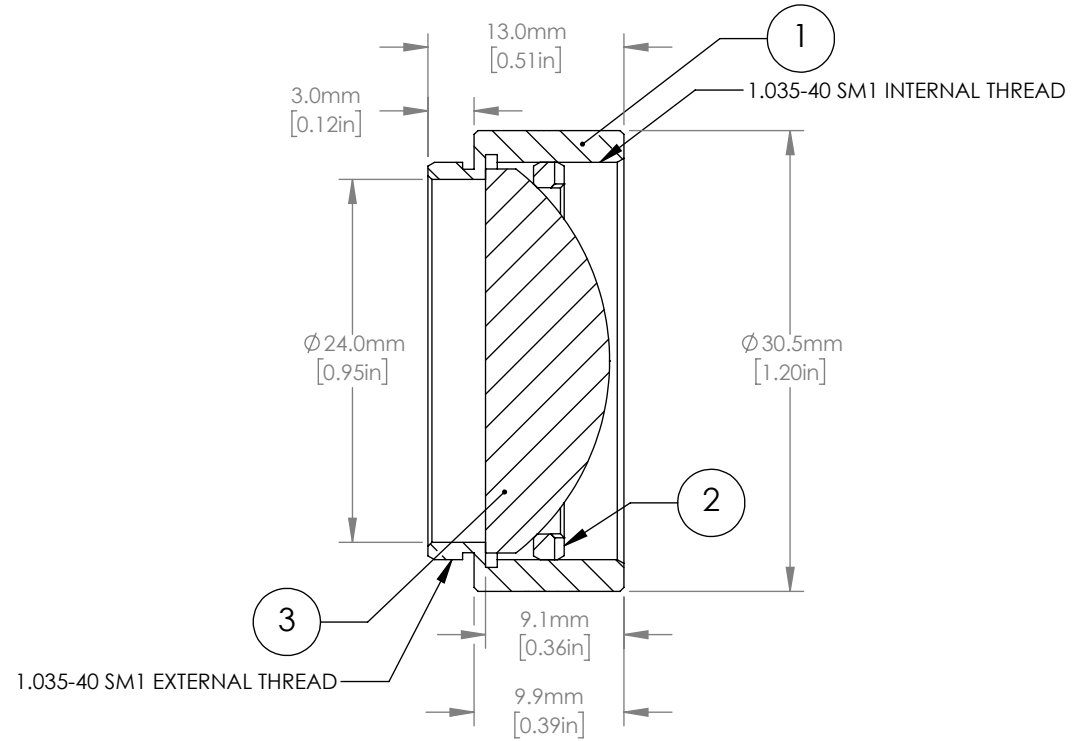
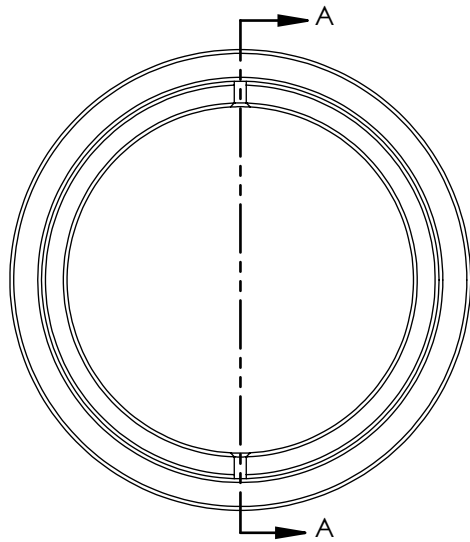


	PART DESCRIPTION	MATERIAL
①	ENGRAVED LENS TUBE	ANODIZED ALUMINUM
②	SM1RR	ANODIZED ALUMINUM
③	LA4052-UV	UV FUSED SILICA



SECTION A-A
SCALE 2 : 1

NOTES/SPECIFICATIONS:

1. DESIGN WAVELENGTH: 587.6 nm
2. FOCAL LENGTH: $f=35.0 \text{ mm} \pm 1\%$
3. WORKING DISTANCE: 25.6 mm
4. CLEAR APERTURE: >90% OF LENS DIAMETER
5. SURFACE QUALITY: 40-20 SCRATCH-DIG
6. AR COATING: 245-400 nm $R_{avg} < 0.5\%$ AT 0 AOI

FOR INFORMATION ONLY
NOT FOR MANUFACTURING PURPOSES

DRAWING PROJECTION			THORLABS www.thorlabs.com f = 35.0 mm, Ø1", SM1- THREADED MOUNT, PLANO-CONVEX LENS, UV-COAT	
NAME	DATE			
DRAWN	DFS	06/NOV/20	MATERIAL	
APPROVAL	BW	12/NOV/20		
COPYRIGHT © 2020 BY THORLABS			SEE TABLE	REV B
VALUES IN PARENTHESIS ARE CALCULATED AND MAY CONTAIN ROUND OFF ERRORS			ITEM #	APPROX WEIGHT
			LA4052-UV-ML	0.041 kg