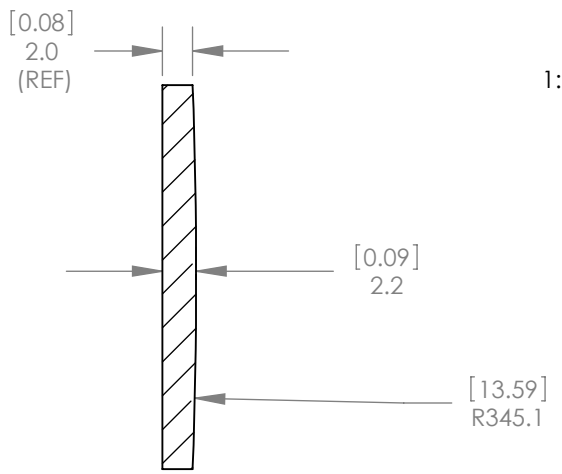
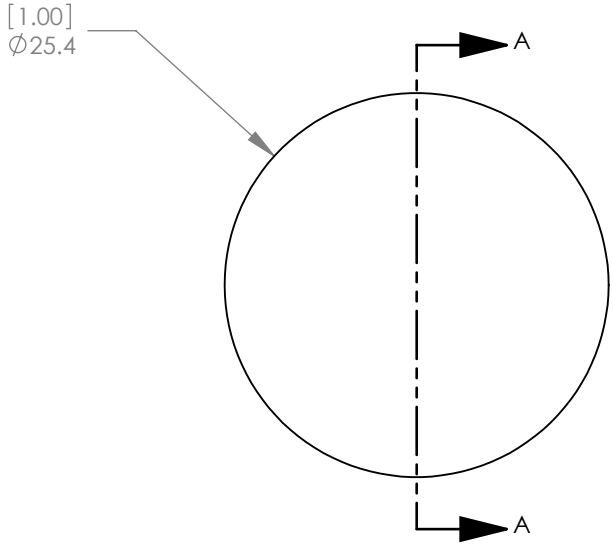


1:1 ISOMETRIC VIEW FOR REFERENCE ONLY



SECTION A-A

- NOTES/SPECIFICATIONS:
1. DESIGN WAVELENGTH: 587.6nm
 2. FOCAL LENGTH: $f=752.6\text{mm} \pm 1\%$
 3. BACK FOCAL LENGTH(REF): $bf=751.1\text{mm}$
 4. CLEAR APERTURE: $>90\%$
 5. SURFACE QUALITY: 40-20 SCRATCH-DIG
 6. CENTRATION: $<3\text{arcmin}$
 7. DIAMETER TOLERANCE: $+0.0/-0.1\text{mm}$
 8. THICKNESS TOLERANCE: $\pm 0.1\text{mm}$

ALL DIMENSIONS ARE IN THE FORM [in]
mm'
THIS DRAWING IS FOR INFORMATION ONLY
NOT INTENDED FOR MANUFACTURING

	NAME	DATE
DRAWN	JC	07/19/2010
ENG APPR.	WD	08/25/2010
MFG APPR.	PM	08/26/2010

PROPRIETARY AND CONFIDENTIAL
THE INFORMATION CONTAINED IN THIS DRAWING IS THE SOLE PROPERTY OF THORLABS, INC. ANY REPRODUCTION IN PART OR AS A WHOLE WITHOUT THE WRITTEN PERMISSION OF THORLABS, INC. IS PROHIBITED.

THORLABS INC. PO BOX 366
NEWTON NJ

TITLE: D=25.40 F=750.00 UV FUSED SILICA PLANO CONVEX LENS

MATERIAL: UV FUSED SILICA	SIZE A	REV. B
SCALE: 2:1		SHEET 1 OF 1
DWG. NO. 3308-E01	PART NO. LA4716	