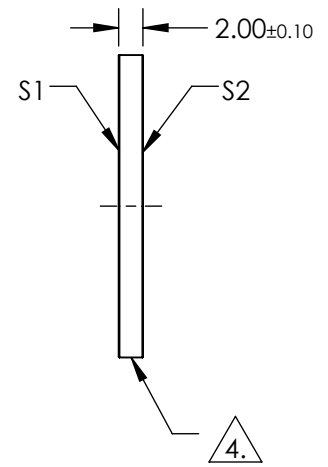
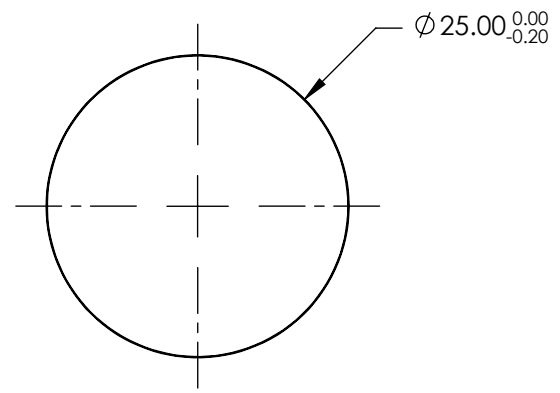


NOTES:

1. SUBSTRATE:
UV GRADE FUSED SILICA
2. COATING (APPLY ACROSS COATING APERTURE):
S1 & S2: YAG-BBAR (550-1100nm)
R(ABS) < 0.25% @ 532nm @ 0° AOI
R(ABS) < 0.25% @ 1064nm @ 0° AOI
R(AVG) < 1.0% FROM 500-1100nm @ 0° AOI
3. SURFACE S2 TO BE PARALLEL TO SURFACE S1 TO WITHIN <5 ARCSEC
4. FINE GRIND SURFACE
5. ROHS COMPLIANT

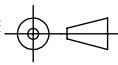


**FOR INFORMATION ONLY:
DO NOT MANUFACTURE
PARTS TO THIS DRAWING**

SPECIFICATIONS SUBJECT TO CHANGE WITHOUT NOTICE
DIMENSIONS ARE FOR REFERENCE ONLY



	S1	S2
SHAPE	PLANO	PLANO
SURFACE QUALITY	20-10	20-10
CLEAR APERTURE	$\varnothing 20.00$	$\varnothing 20.00$
BEVEL	PROTECTIVE AS NEEDED	PROTECTIVE AS NEEDED

THIRD ANGLE PROJECTION 

ALL DIMS IN mm

TITLE	25mm Dia., 2mm Thick, YAG-BBAR Coated $\lambda/10$ Fused Silica Window	
DWG NO	13354	SHEET 1 OF 1