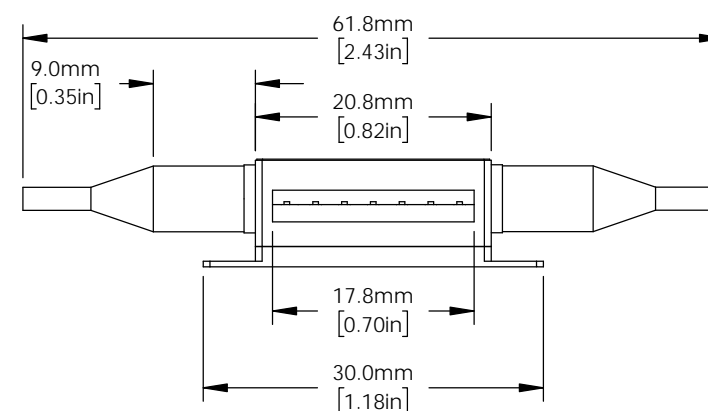
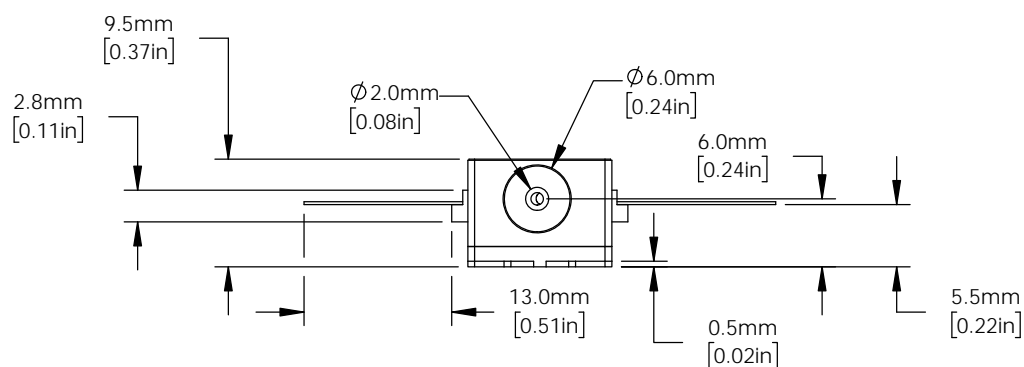


PIN IDENTIFICATION	
1. TEC +	14. TEC -
2. Thermistor	13. Ground
3. NC	12. NC
4. NC	11. Dev Cathode
5. Thermistor	10. Dev Anode
6. NC	9. NC
7. NC	8. NC




#### NOTES:

1. THE DEVICE IS SUPPLIED WITH 2 ATTACHED FIBER TAILS.

#### 2. FIBER TAIL DETAILS:

- LENGTH: 1.5m [4.5ft]
- TERMINATION: FC/APC CONNECTORS
- FIBER TYPE: SMF 28e

FOR INFORMATION ONLY  
NOT FOR MANUFACTURING PURPOSES

DRAWING PROJECTION			 <a href="http://www.thorlabs.com">www.thorlabs.com</a>	
NAME	DATE			
DRAWN	RH	15/DEC/20	BOOSTER OPTICAL AMPLIFIER 1685nm, SM FIBER	
APPROVAL	WY	15/DEC/20	MATERIAL	
COPYRIGHT © 2020 BY THORLABS			N/A	
VALUES IN PARENTHESIS ARE CALCULATED AND MAY CONTAIN ROUND OFF ERRORS			ITEM #	APPROX WEIGHT
			BOA1084S	0.02 kg