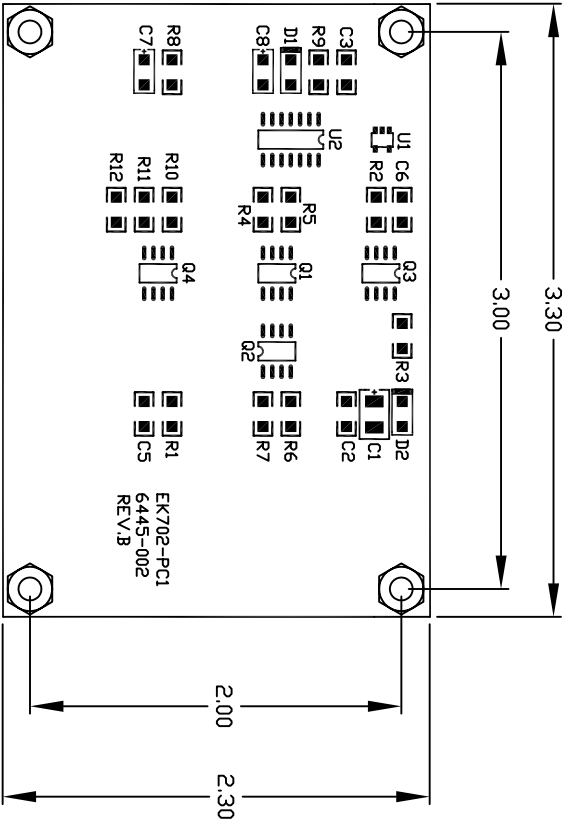
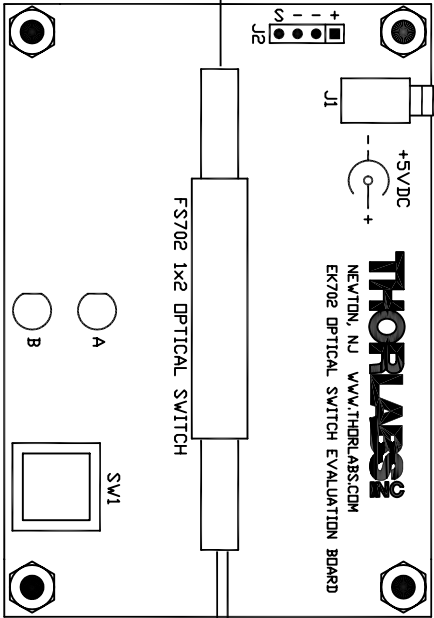
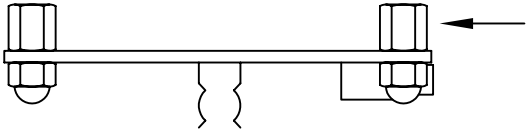


REV.#	DESCRIPTION	NAME/DATE:
A	INITIAL RELEASE	RDS 2/24/02
B	REMOVED J3 EDMD 6587-014	RDS 4/28/05



STANDOFF 4 PLACES  
0.25" HEX  
#4-40 FEMALE THREAD  
0.187" DEEP



Connector Assignments:

- J1 +4.5 to +5.5VDC  
Accepts 2.5mm male phono jack  
J2-1(+) +4.5 to +5.5VDC with respect to J2-2(-).  
J2-4(S) Remote Switch Input  
Normally Open, when momentarily closed  
to ground, J2-3(-) Optical Switch will toggle.

Fiber Lengths: 1 meter typical

THORLABS PD BOX 366 NEWTON NJ				
TITLE EK702 Engineering Support DWG				
TOL: XXXX+/-0.005 XXX+/-0.010 ANGULAR +/-30°				
SURF. FINISH 32 MICRONS UNLESS OTHERWISE NOTED				
DRAWN	ENGINEER	APPROVED		
RDS	RDS	RDS		
MATERIAL				
DATE	REV	SIZE	SHEET	DRAWING SCALE
2/22/02	B	A	1 OF 1	NONE
DWG NO.	PART NO.			
6445-E01	EK702			