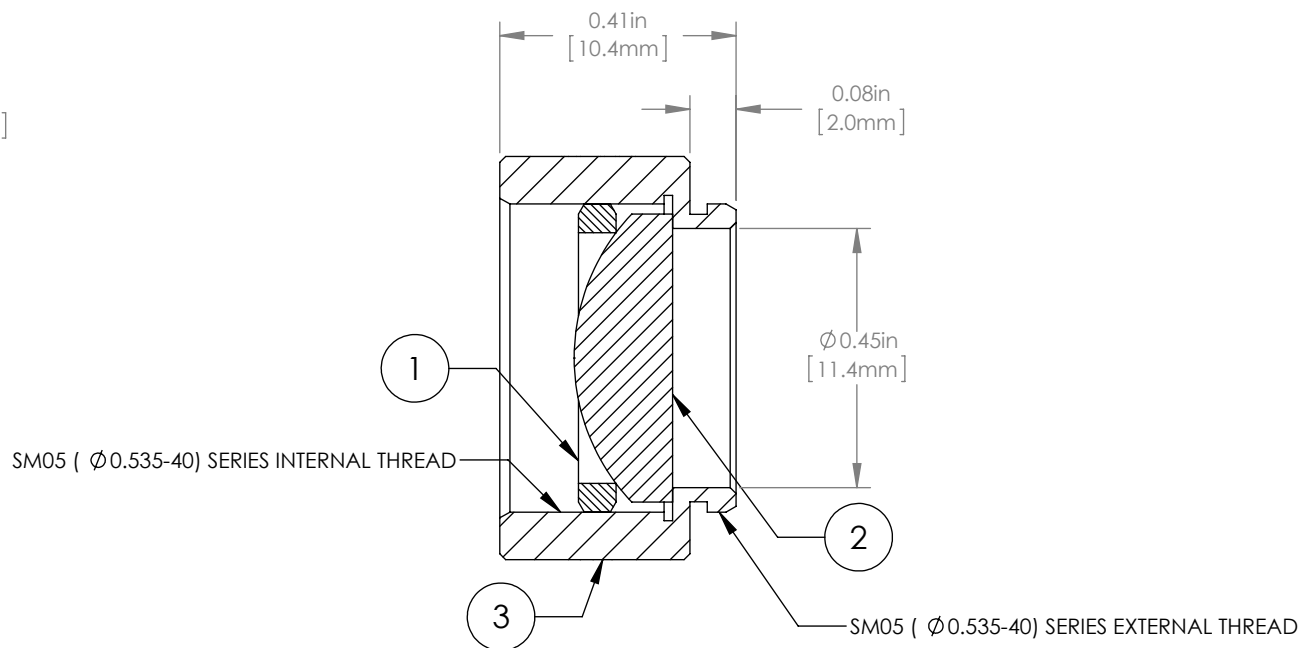
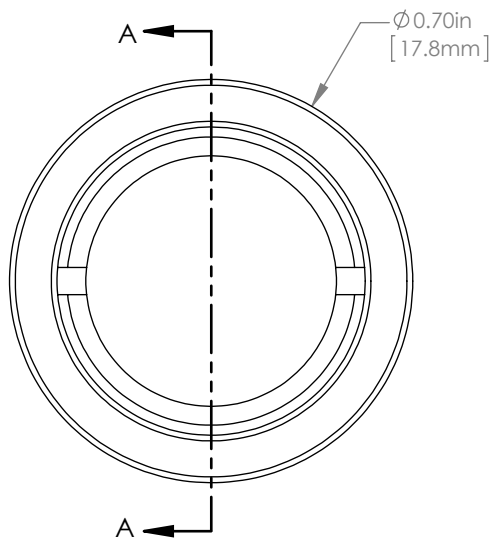


	PART DESCRIPTION	MATERIAL
①	SM05RR	ANODIZED ALUMINUM
②	LA4647	UV FUSED SILICA
③	ENGRAVED HOUSING	ANODIZED ALUMINUM



NOTES/SPECIFICATIONS:

- DESIGN WAVELENGTH: 546nm
- FOCAL LENGTH: $f=20.0\text{mm} \pm 1\%$
- WORKING DISTANCE (REF): 14.2mm
- CLEAR APERTURE: $> \phi 11.05\text{mm}$
- SURFACE QUALITY: 40-20 SCRATCH-DIG

FOR INFORMATION ONLY
NOT FOR MANUFACTURING PURPOSES

DRAWING PROJECTION			THORLABS www.thorlabs.com $\phi 1/2"$ MOUNTED PLANO-CONVEX LENS, $f=20\text{mm}$	
	NAME	DATE		
DRAWN	GG	13/OCT/15	MATERIAL SEE TABLE	
APPROVAL	DD	13/OCT/15		
COPYRIGHT © 2015 BY THORLABS			ITEM #	APPROX WEIGHT
VALUES IN PARENTHESIS ARE CALCULATED AND MAY CONTAIN ROUND OFF ERRORS			LA4647-ML	3 g
			REV	A