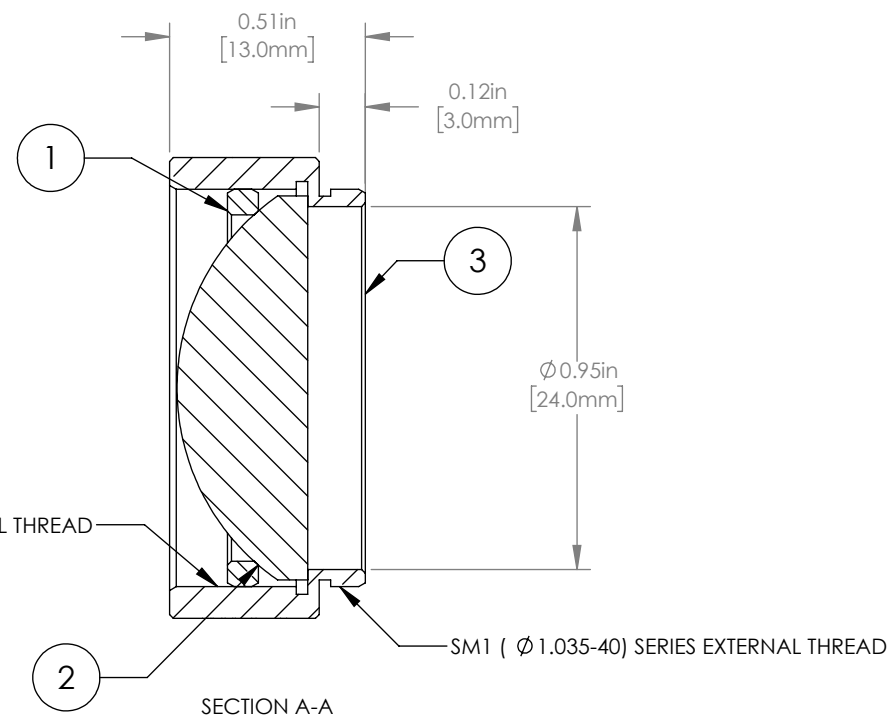
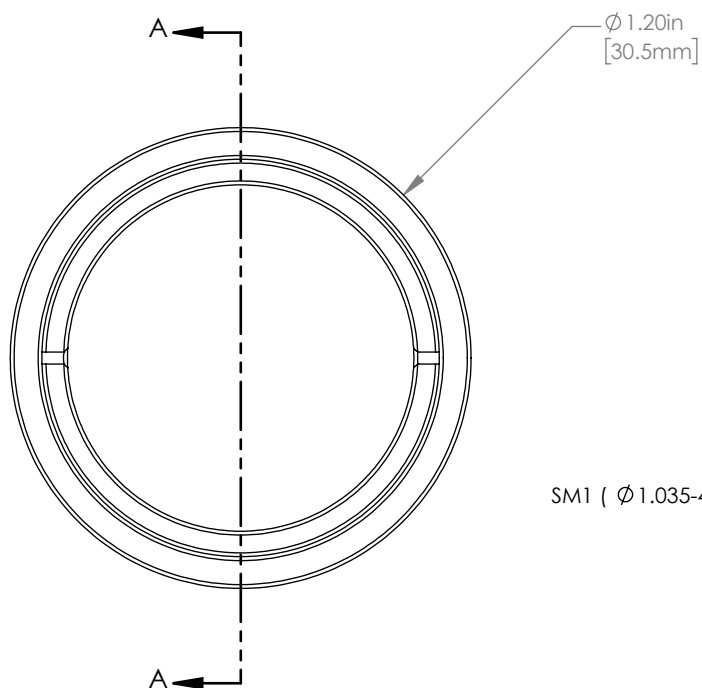


	PART DESCRIPTION	MATERIAL
①	SM1RR	ANODIZED ALUMINUM
②	LA1805-A	N-BK7
③	ENGRAVED HOUSING	ANODIZED ALUMINUM



NOTES/SPECIFICATIONS:

- DESIGN WAVELENGTH: 587.6 nm
- FOCAL LENGTH:  $f=29.9\text{ mm} \pm 1\%$
- WORKING DISTANCE (REF): 20.4 mm
- CLEAR APERTURE:  $\phi 22.9\text{ mm}$
- SURFACE QUALITY: 40-20 SCRATCH-DIG
- COATING: BBAR  $<0.5\%$  FROM 350 nm-700 nm,  $0^\circ$  AOI, ON BOTH OPTICAL SURFACES

FOR INFORMATION ONLY  
NOT FOR MANUFACTURING PURPOSES

DRAWING PROJECTION				<b>THORLABS</b> www.thorlabs.com	
	NAME	DATE	MOUNTED $\phi 1''$ $f=30\text{ mm}$		
DRAWN	GG	20/JAN/20	PLANO CONVEX LENS, -A COATED		
APPROVAL	DD	20/JAN/20	MATERIAL	SEE TABLE	REV A
<small>COPYRIGHT © 2020 BY THORLABS</small>			ITEM #	LA1805-A-ML	APPROX WEIGHT
<small>VALUES IN PARENTHESIS ARE CALCULATED AND MAY CONTAIN ROUND OFF ERRORS</small>					14 g