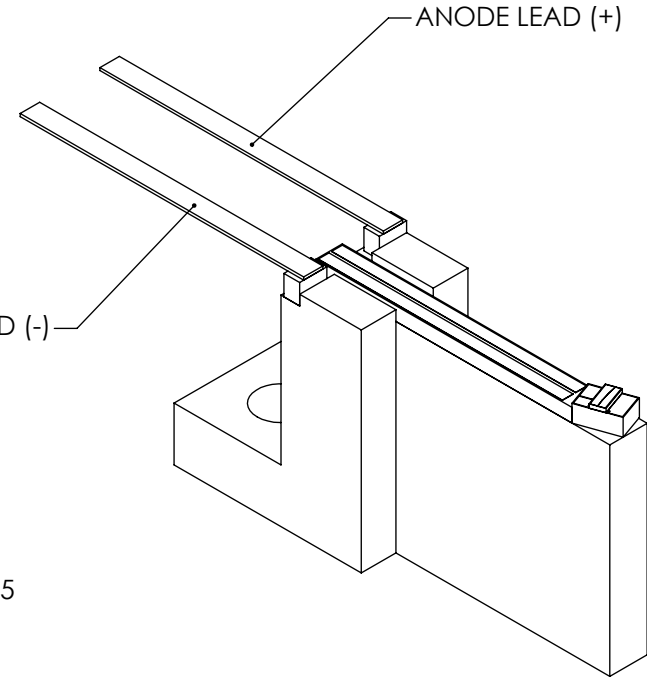
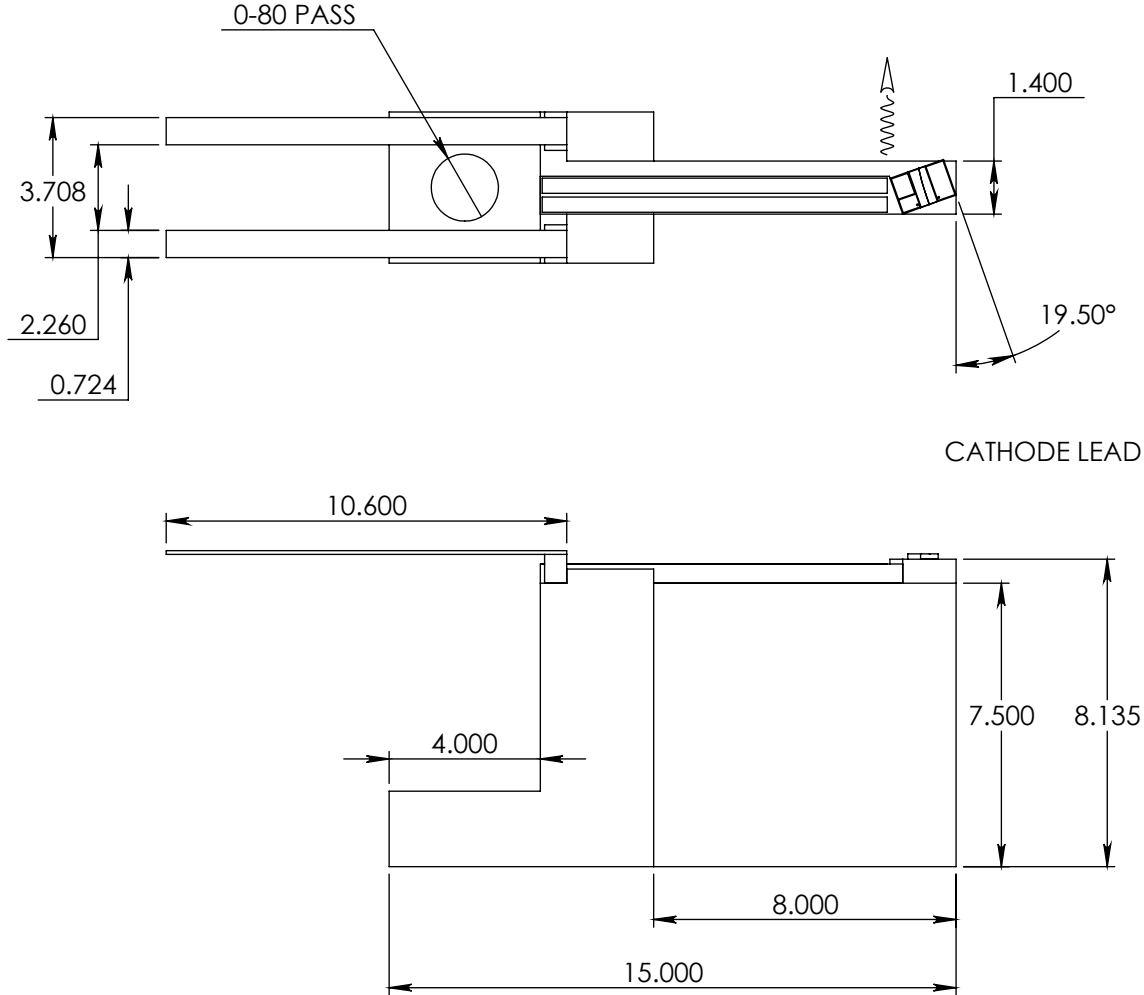


THE INFORMATION CONTAINED IN THIS DRAWING IS SENSITIVE AND PROPRIETARY AND IS THE SOLE PROPERTY OF COVEGA CORPORATION. ANY REPRODUCTION IN PART OR IN WHOLE WITHOUT THE WRITTEN PERMISSION OF COVEGA CORPORATION IS PROHIBITED.



UNLESS OTHERWISE SPECIFIED:
 DIMENSIONS ARE IN MM.
 TOLERANCES ARE:
 DECIMALS ANGLES
 .XXX ± 0.025 ± 1
 .XX ± 0.075
 .X ± 0.125
 REMOVE ALL BURRS AND BREAK SHARP EDGES 0.1 MAX.

MATERIAL
 FINISH

THIRD ANGLE PROJECTION	
APPROVALS	DATE
DRAWN	
CHECKED	
ENGINEER	
APPROV	CCB
DO NOT SCALE DRAWING	

COVEGA CORPORATION
 10335 GUILFORD ROAD, JESSUP MD 20794

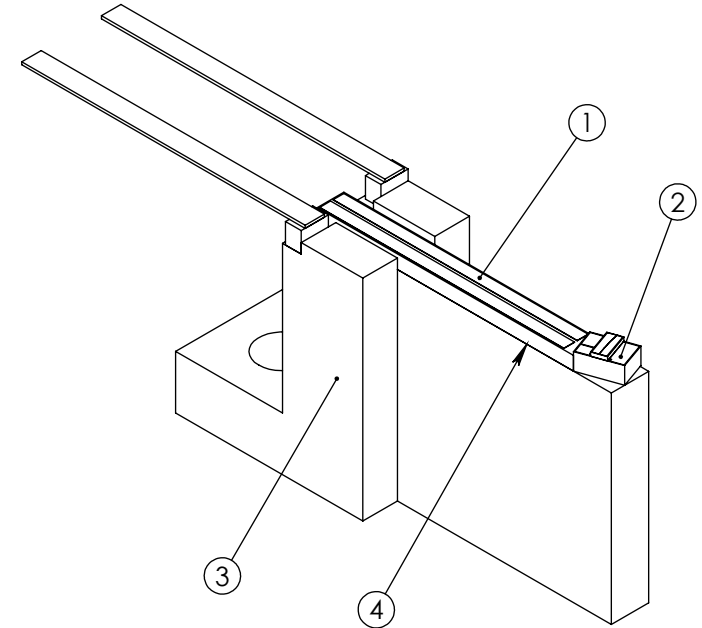
SAF1118H Heatsink Assembly

SIZE A	Doc log. NO. 20253	REV. A
SCALE 5:1	CADFILE: <small>Product: PowerEnergy CAD: SAF Cooling Products: SAF 1.0mm.dwg on Headers</small>	SHEET 1 OF 2

THE INFORMATION CONTAINED IN THIS DRAWING IS SENSITIVE AND PROPRIETARY AND IS THE SOLE PROPERTY OF COVEGA CORPORATION. ANY REPRODUCTION IN PART OR IN WHOLE WITHOUT THE WRITTEN PERMISSION OF COVEGA CORPORATION IS PROHIBITED.



CO#	REVISION DESCRIPTION	APPROVED	DATE
1	01932 Initial Release		

ITEM NO.	QTY.	PART NO.	Rev.	DESCRIPTION
1	1	32083-000	1	SAF - Ceramic Conductor Trace - Angled End Left (19.5°, 1.0mm)
2	1	22068-xxx	C	1.0mm SAF Submount Assy RR
3	1	32239-000	1	1.40mm Heatsink w/Tabs
4	1	32085-000	1	1 mil Solder Preform 60Pb-40In (.040 X .400)



Notes:

1. Interpret drawing per ASME Y14.5M-1994.
2. See COVEGA Specification 7.4.2.PS.0014 for general requirements and sampling of circled dimensions.

UNLESS OTHERWISE SPECIFIED: DIMENSIONS ARE IN MM. TOLERANCES ARE: DECIMALS ANGLES .XXX ± 0.025 ± 1 .XX ± 0.075 .X ± 0.125 REMOVE ALL BURRS AND BREAK SHARP EDGES 0.1 MAX.		 THIRD ANGLE PROJECTION		 COVEGA CORPORATION 10335 GUILFORD ROAD, JESSUP MD 20794	
APPROVALS		DATE		19.5° 1.0mm SAF Heatsink Assembly RR (PA-00059)	
DRAWN	HD	11/17/06			
CHECKED	GI	11/17/06			
ENGINEER	AD	11/17/06			
APPROV		CCB		SIZE A DWG. NO. 22239-xxx REV. 1	
FINISH		DO NOT SCALE DRAWING		SCALE 5:1 CADFILE: <small>PA-00059.dwg</small> SHEET 2 OF 2	