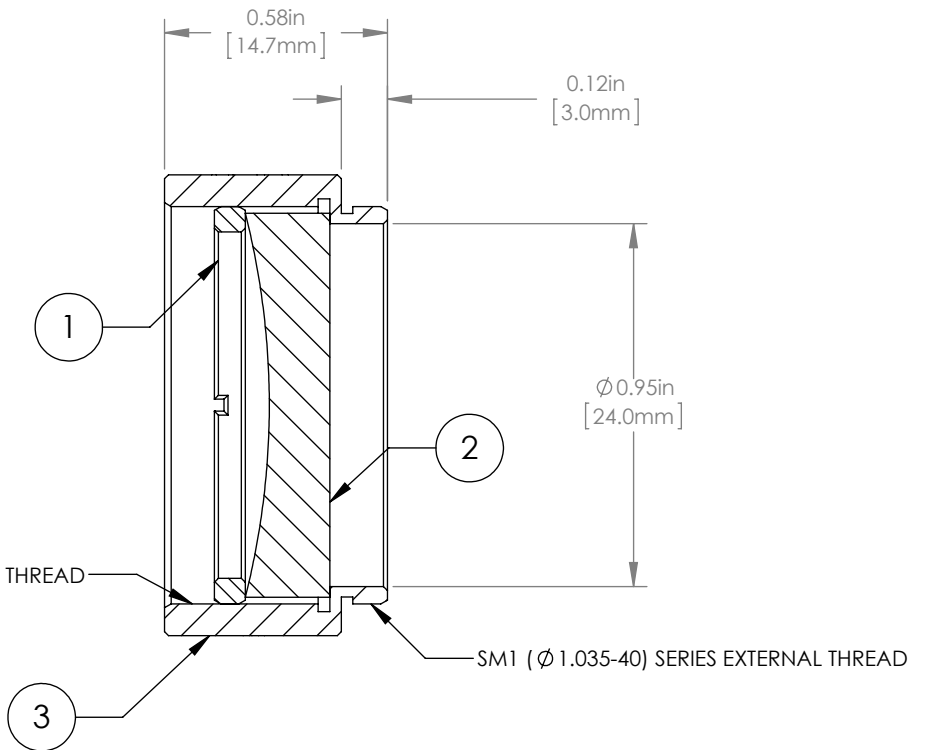
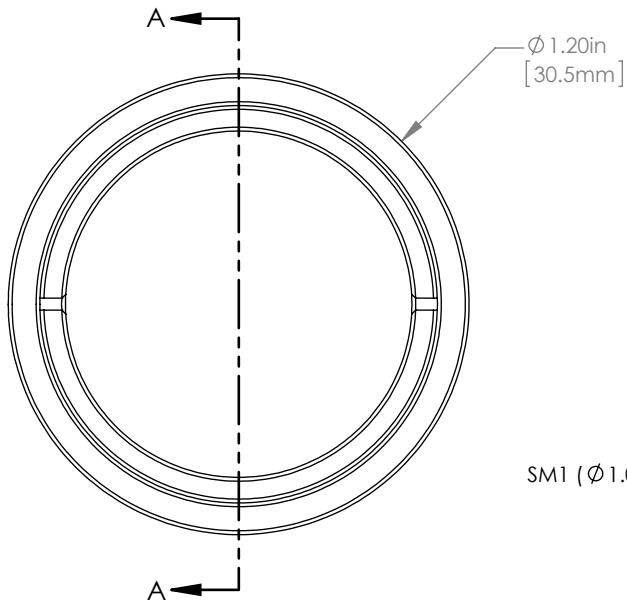


	PART DESCRIPTION	MATERIAL
①	SM1RR	ANODIZED ALUMINUM
②	LC1120	N-BK7
③	ENGRAVED HOUSING	ANODIZED ALUMINUM



NOTES/SPECIFICATIONS:

- DESIGN WAVELENGTH: 633nm
- FOCAL LENGTH: $f = -99.9\text{mm} \pm 1\%$
- WORKING DISTANCE (REF): -91.6mm
- CLEAR APERTURE: $> \varnothing 22.86\text{mm}$
- SURFACE QUALITY: 40-20 SCRATCH-DIG

FOR INFORMATION ONLY
NOT FOR MANUFACTURING PURPOSES

DRAWING PROJECTION			THORLABS www.thorlabs.com	
NAME	DATE	$\varnothing 1"$ MOUNTED PLANO-CONCAVE LENS, $f = -100\text{mm}$		
DRAWN	20/NOV/15	MATERIAL		REV
APPROVAL	20/NOV/15	SEE TABLE		A
COPYRIGHT © 2015 BY THORLABS		ITEM #	APPROX WEIGHT	
VALUES IN PARENTHESIS ARE CALCULATED AND MAY CONTAIN ROUND OFF ERRORS		LC1120-ML	7 g	