

NOTES:

**FOR INFORMATION ONLY:
DO NOT MANUFACTURE
PARTS TO THIS DRAWING**

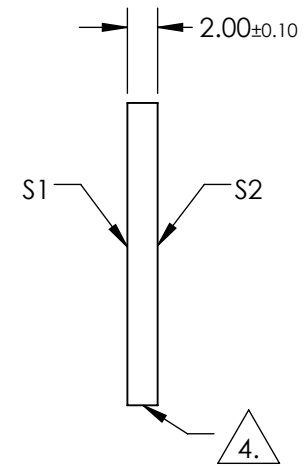
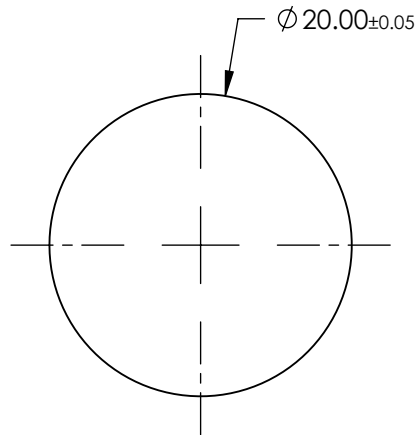
1. SUBSTRATE
SAPPHIRE (Al₂O₃)
2. SURFACE S2 TO BE PARALLEL WITH SURFACE S1 TO WITHIN ≤3.5 ARCMIN
3. COATING (APPLY ACROSS CLEAR APERTURE)

S1: R(AVG) ≤ 0.5% FROM 600-1050nm @ 0° AOI

S2: R(AVG) ≤ 0.5% FROM 600-1050nm @ 0° AOI

3. FINE GRIND SURFACE

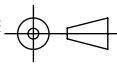
4. POWER, IRREGULARITY, AND SURFACE QUALITY SPECIFICATIONS
APPLY ACROSS CLEAR APERTURE
5. ROHS COMPLIANT



	S1	S2
SHAPE	PLANO	PLANO
CLEAR APERTURE	Ø18	Ø18
SURFACE FLATNESS	2λ	2λ
SURFACE ROUGHNESS	0.1 MICRONS PER INCH	0.1 MICRONS PER INCH
SURFACE QUALITY	80-50	80-50
BIREFRINGENCE (n _o -n _e)	0.008	0.008
BEVEL	PROTECTIVE AS NEEDED	PROTECTIVE AS NEEDED

SPECIFICATIONS SUBJECT TO CHANGE WITHOUT NOTICE
DIMENSIONS ARE FOR REFERENCE ONLY

EO® **Edmund Optics**®

THIRD ANGLE PROJECTION 

ALL DIMS IN mm

TITLE	20mm DIAMETER, NIR I COATED SAPPHIRE WINDOW	
DWG NO	36498	SHEET 1 OF 1