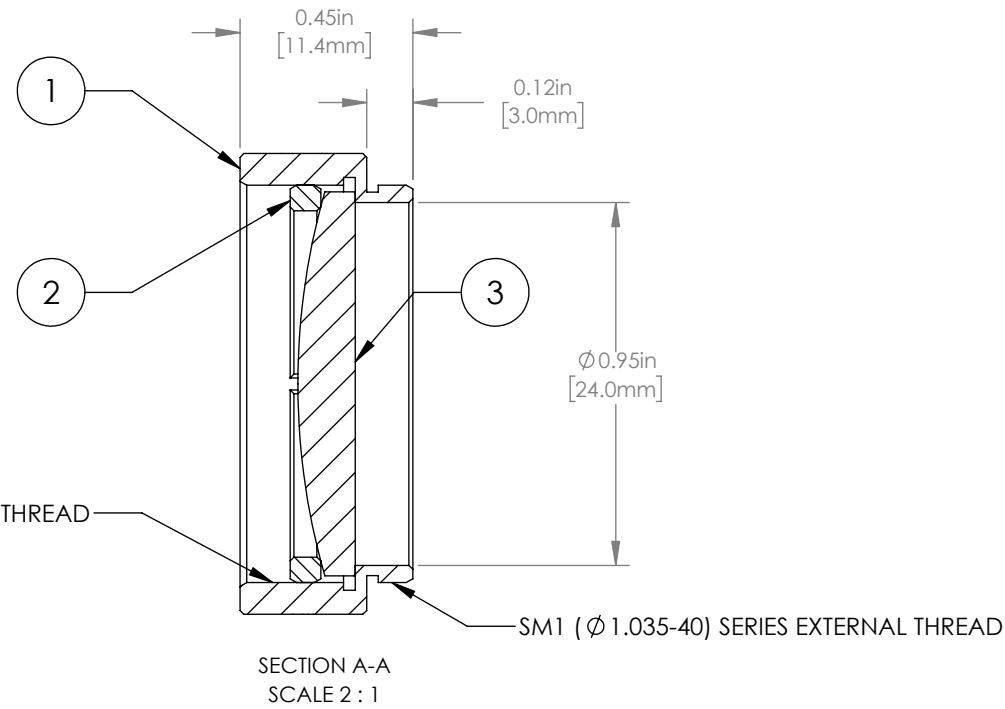
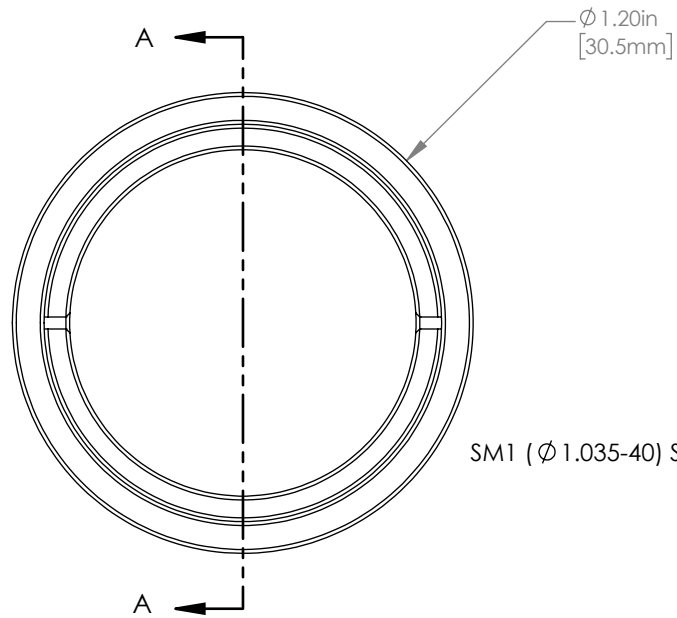


	PART DESCRIPTION	MATERIAL
①	ENGRAVED HOUSING	ANODIZED ALUMINUM
②	SM1RR	ANODIZED ALUMINUM
③	LA4380	UV FUSED SILICA



NOTES/SPECIFICATIONS:

- DESIGN WAVELENGTH: 587.6 nm
- FOCAL LENGTH:  $f=100.3\text{ mm} \pm 1\%$
- WORKING DISTANCE: 93.9 mm
- CLEAR APERTURE:  $\varnothing 22.9\text{ mm}$
- SURFACE QUALITY: 40-20 SCRATCH-DIG

FOR INFORMATION ONLY  
NOT FOR MANUFACTURING PURPOSES

DRAWING PROJECTION			<b>THORLABS</b> www.thorlabs.com MOUNTED $\varnothing 25.4\text{ mm}$ , $f = 100.0\text{ mm}$ PLANO CONVEX LENS	
NAME	DATE			
DRAWN	GG	22/AUG/19	MATERIAL SEE TABLE	
APPROVAL	DD	22/AUG/19		
COPYRIGHT © 2019 BY THORLABS			ITEM #	APPROX WEIGHT
VALUES IN PARENTHESIS ARE CALCULATED AND MAY CONTAIN ROUND OFF ERRORS			LA4380-ML	7 g

REV B