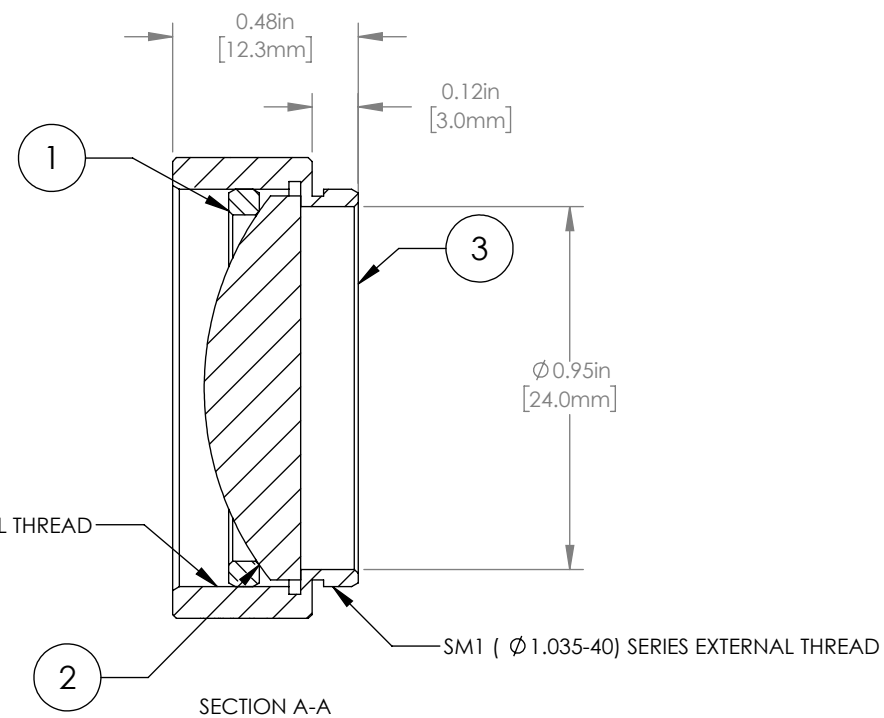
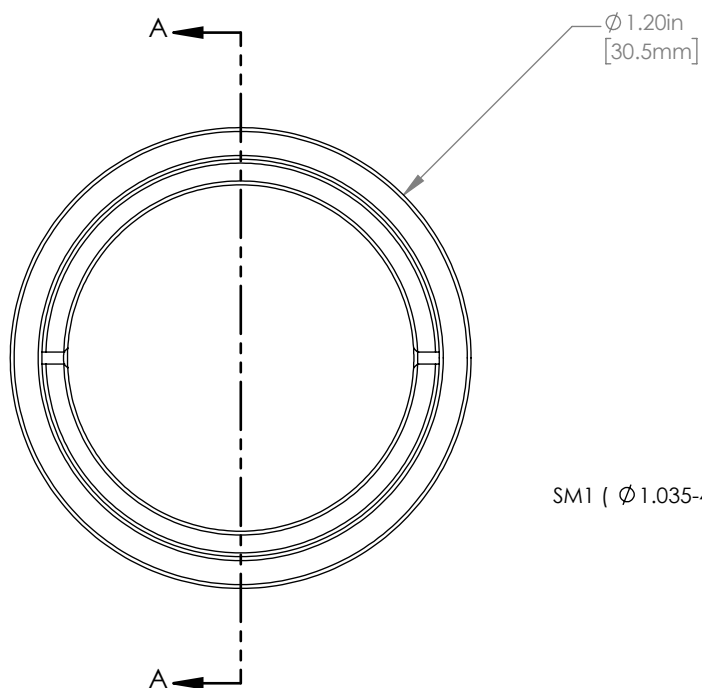


	PART DESCRIPTION	MATERIAL
①	SM1RR	ANODIZED ALUMINUM
②	LA1422-B	N-BK7
③	ENGRAVED HOUSING	ANODIZED ALUMINUM



NOTES/SPECIFICATIONS:

1. DESIGN WAVELENGTH: 587.6 nm
2. FOCAL LENGTH: $f=39.9\text{ mm} \pm 1\%$
3. WORKING DISTANCE (REF): 31.9 mm
4. CLEAR APERTURE: $\phi 22.9\text{ mm}$
5. SURFACE QUALITY: 40-20 SCRATCH-DIG
6. COATING: BBAR $<0.5\%$ FROM 650 nm-1050 nm, 0° AOI, ON BOTH OPTICAL SURFACES

FOR INFORMATION ONLY
NOT FOR MANUFACTURING PURPOSES

DRAWING PROJECTION					
	NAME		DATE	THORLABS www.thorlabs.com MOUNTED $\phi 1''$ $f=40\text{ mm}$ PLANO CONVEX LENS, -B COATED	
DRAWN	GG		20/JAN/20		
APPROVAL	DD		20/JAN/20		
COPYRIGHT © 2020 BY THORLABS				MATERIAL	
VALUES IN PARENTHESIS ARE CALCULATED AND MAY CONTAIN ROUND OFF ERRORS				SEE TABLE	
				ITEM #	APPROX WEIGHT
				LA1422-B-ML	14 g

REV
A