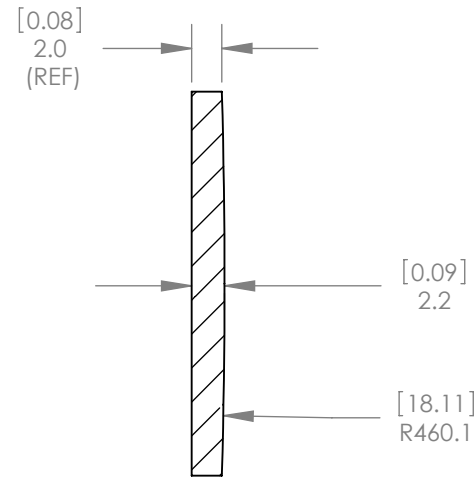
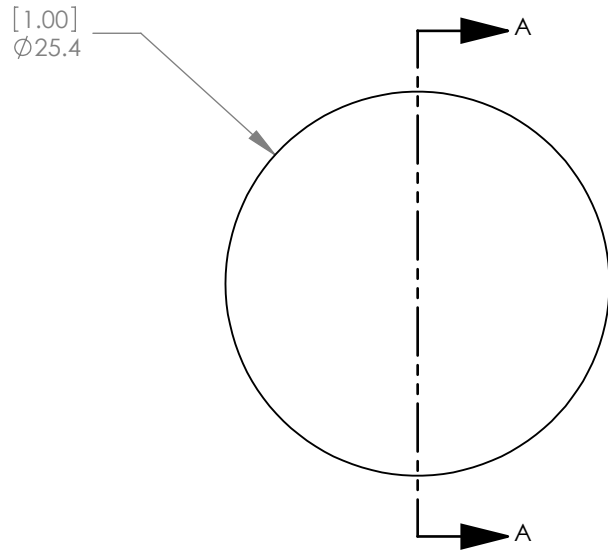




1:1 ISOMETRIC VIEW FOR REFERENCE ONLY



SECTION A-A

NOTES/SPECIFICATIONS:

1. DESIGN WAVELENGTH: 587.6nm
2. FOCAL LENGTH:  $f=1003.5\text{mm} \pm 1\%$
3. BACK FOCAL LENGTH(REF):  $bf=1002.0\text{mm}$
4. CLEAR APERTURE:  $>90\%$
5. SURFACE QUALITY: 40-20 SCRATCH-DIG
6. CENTRATION:  $<3\text{arcmin}$
7. DIAMETER TOLERANCE:  $+0.0/-0.1\text{mm}$
8. THICKNESS TOLERANCE:  $\pm 0.1\text{mm}$

ALL DIMENSIONS ARE IN THE FORM  $\frac{[in]}{mm}$   
 THIS DRAWING IS FOR INFORMATION ONLY  
 NOT INTENDED FOR MANUFACTURING

**THORLABS INC.** PO BOX 366  
 NEWTON NJ

TITLE: D=25.40 F=1000.00 UV FUSED SILICA  
 PLANO CONVEX LENS

MATERIAL: UV FUSED SILICA      SIZE A      REV. B

SCALE: 2:1      SHEET 1 OF 1

DWG. NO. 3309-E01      PART NO. LA4663

	NAME	DATE
DRAWN	JC	07/19/2010
ENG APPR.	WD	08/25/2010
MFG APPR.	PM	08/26/2010

**PROPRIETARY AND CONFIDENTIAL**

THE INFORMATION CONTAINED IN THIS DRAWING IS THE SOLE PROPERTY OF THORLABS, INC. ANY REPRODUCTION IN PART OR AS A WHOLE WITHOUT THE WRITTEN PERMISSION OF THORLABS, INC. IS PROHIBITED.