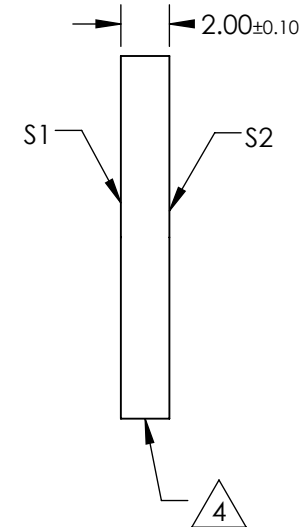
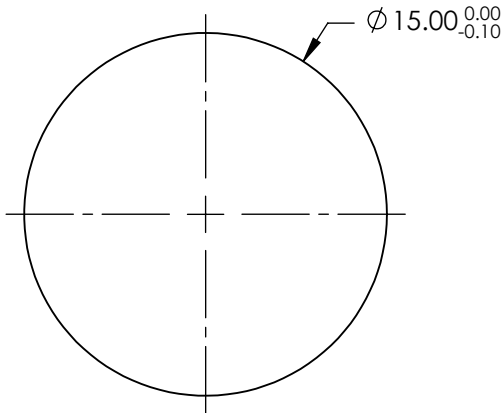
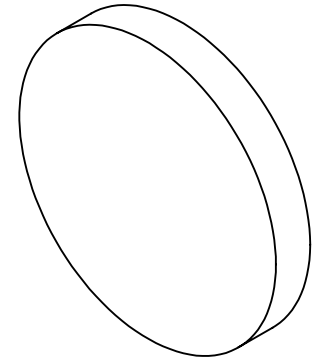


NOTES:

1. SUBSTRATE:
FUSED SILICA
2. S2 TO BE PARALLEL WITH S1 TO WITHIN < 1 ARCMIN
3. COATING (APPLY ACROSS CLEAR APERTURE)
S1 & S2: R(ABS) ≤ 0.25% AT 880nm
R(AVG) ≤ 1.25% FROM 400-870nm
R(AVG) ≤ 1.25% FROM 890-1000nm
4. FINE GRIND SURFACE
5. RoHS COMPLIANT



**FOR INFORMATION ONLY:
DO NOT MANUFACTURE
PARTS TO THIS DRAWING**

SPECIFICATIONS SUBJECT TO CHANGE WITHOUT NOTICE
DIMENSIONS ARE FOR REFERENCE ONLY

	S1	S2
SHAPE	PLANO	PLANO
SURFACE QUALITY	40-20	40-20
CLEAR APERTURE (mm)	Ø13.50	Ø13.50
BEVEL	PROTECTIVE AS NEEDED	PROTECTIVE AS NEEDED

THIRD ANGLE PROJECTION

ALL DIMS IN mm

Edmund Optics®

TITLE

15mm DIA., 2mm THICK, VIS-NIR COATED,
λ/4 FUSED SILICA WINDOW

DWG NO

14986

SHEET
1 OF 1