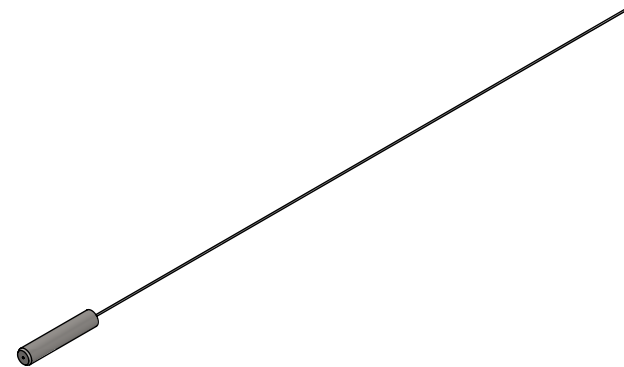
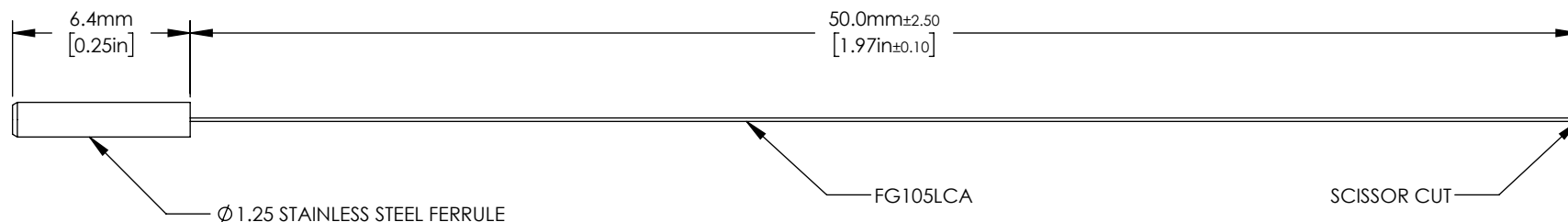


FIBER SPECIFICATIONS*

FIBER TYPE	CORE DIAMETER	CLADDING DIAMETER**	COATING DIAMETER	NA	OPERATING WAVELENGTH
FG105LCA	105 +1/-3 μm	125 +1/-2 μm	250 ±10 μm	0.22 ± 0.02	400 - 2400 nm



ISOMETRIC VIEW
SCALE 2 : 1



INCLUDED BUT NOT SHOWN:
1 PROTECTIVE DUST CAP

FOR INFORMATION ONLY
NOT FOR MANUFACTURING PURPOSES

DRAWING PROJECTION			THORLABS www.thorlabs.com	
NAME	DATE	1.25mm STAINLESS FIBER OPTIC CANNULA 105 μm, 0.22NA, UNCLEAVED 20 PACK		
DRAWN	JL	07/MAY/15	MATERIAL	
APPROVAL	HC	19/APR/22	N/A	
COPYRIGHT © 2017 BY THORLABS			ITEM #	APPROX WEIGHT
VALUES IN PARENTHESIS ARE CALCULATED AND MAY CONTAIN ROUND OFF ERRORS			CFML21U-20	0.04 g
			REV	C